



The new Lightstyle

Catalogue 2024

Professional Lighting
for Industry and Science



Table of Contents

Ring Lights Next Gen	4
RL40d <Diffuse/>	4
RL40 Series <Standard/>	5
RL66d <Diffuse/>	6
RL66 Series <Standard/>	7
RL81 Series <Standard/>	8
RL40Sd <Diffuse Segment/>	9
RL40S Series <Segment/>	10
RL66Sd <Diffuse Segment/>	11
RL66S Series <Segment/>	12
RL81S Series <Segment/>	13
RL66M Series <Multiple Colors/>	14
Ring Lights Classic	15
RL1 Series <Standard/>	15
RL2 Series <Standard/>	16
RL4 Series <Standard/>	17
RL5 Series <Standard/>	19
RL1-S40 Series <Segment/>	20
RL2-S40 Series <Segment/>	21
RL4-S40 Series <Segment/>	22
RL5-S40 Series <Segment/>	23
Ring Lights Power Line	24
RL12 Series <Standard/>	24
RL12-S40 Series <Segment/>	26
RL12-24V Series <24 volt direct connection/>	28
Fiber Optical Lighting	30
LED3 Series <Cold Light Sources with Passive Cooling/>	30
LED.70 <Cold Light Sources with Passive Cooling/>	31
LED8 <Cold Light Sources with Active Cooling/>	32
GLF Series <Flexible Light Guides/>	33
GLS Series <Semi-rigid Light Guides/>	34
SLR Series <Fiber Optical Ring Lights/>	35
Laboratory and Work Place Lamps	36
IL11 Series <Incident Lamps/>	36
IL21 Series <Incident Lamps/>	37
PL Series <Work Place Lamps/>	38
LL6 Series <Magnifier Luminaires/>	39
LS Series <Endoscope Light Sticks/>	40

Laboratory and Machine Lamps modulLED®	41
IL1-Lab Series <Incident Lamps/>	41
IL1 Series <Incident Lamps/>	42
IL12-Lab Series <Incident Lamps/>	43
IL12 Series <Incident Lamps/>	44
IL13 Series <Incident Lamps/>	45
IL100 <Machine Lamps/>	46
IL1300 <Machine Lamps/>	47
IL100-24V <Machine Lamps/>	48
IL1300-24V <Machine Lamps/>	49
IL100-F <Machine Lamps/>	50
IL1300-F <Machine Lamps/>	51
modulLED®21 <LED Modules 21 mm/>	52
IL3 Series <Incident Lamps/>	53
IL300 <Machine Lamps/>	54
IL300-24V <Machine Lamps/>	55
modulLED®28 <LED Modules 28 mm/>	56
Microscope Lighting	57
MLH2 Series <Lamp Houses/>	57
DL4 <Transmitted Lights/>	58
MSL1 <Microscope Stands/>	59
MSL2 <Microscope Stands/>	60
MSL3 Series <Microscope Stands/>	61
MSL4 <Microscope Stands/>	62
Accessories	63
for Ring Lights	63
for Fiber Optical Lighting	64
for Incident and Machine Lamps	65
for Microscope Lighting	66
for Power Supply	66

All prices are net prices, plus value added tax and costs of shipping and packaging.
Custom-made products and alternative combinations available on request.

Ring Lights Next Gen

RL40d <Diffuse/>



Luminous flux	approx. 300 lm
Color temperature	5.700 K (pure white)
Color rendering index (CRI)	≥ 90
LED life span	54.000 h (L70, according to manufacturer)
Brightness control	sensitive adjusting 0 - 100% with memory function
Power consumption	approx. 3,5 W
Input power supply	100 - 240 V AC, 50/60 Hz
Output power supply	24 V DC, 1 A
Height	27,6 mm
Outer diameter	58 mm
Inner diameter	30 mm
Clamping diameter	max. 40 mm
Inner thread	M30,5 × 0,5
Length supply line	0,85 m
Length power cord	1,40 m
Material	anodized aluminium
Color	black
Weight	approx. 94 g
Dimensions control unit (l × w × h)	78 mm × 38 mm × 21 mm



Applications

Microscopy
Machine Vision

Accessories

Reducing Rings [Page 63](#)

Versions

RL40d	<i>pure white (5.700 K), diffuse</i>	100-012744	626,00 €
-------	--------------------------------------	------------	----------



Next Gen

Ring Lights Next Gen

RL40 Series <Standard/>



Number of LEDs	8
Color rendering index (CRI)	≥ 95
LED life span	54.000 h (L70, according to manufacturer)
Brightness control	sensitive adjusting 0 - 100% with memory function
Power consumption	approx. 6 W
Input power supply	100 - 240 V AC, 50/60 Hz
Output power supply	24 V DC, 1 A
Height	25,1 mm
Outer diameter	58 mm
Inner diameter	30 mm
Clamping diameter	max. 40 mm
Inner thread	M30,5 × 0,5
Length supply line	0,85 m
Length power cord	1,40 m
Material	anodized aluminium
Color	black
Weight	approx. 125 g
Dimensions control unit (l × w × h)	78 mm × 38 mm × 21 mm



Applications

Microscopy
Machine Vision

Accessories

Diffusor Dis [Page 63](#)
Reducing Rings [Page 63](#)

Versions

RL40-35 PW	<i>pure white (5.600 K), working distance 35 mm</i>	100-012211	395,00 €
RL40-35 NW	<i>natural white (4.000 K), working distance 35 mm</i>	100-012231	395,00 €
RL40-35 UV395	<i>UV (395 nm), working distance 35 mm</i>	100-012296	556,00 €
RL40-35 UV385	<i>UV (385 nm), working distance 35 mm</i>	100-012292	609,00 €
RL40-35 UV365	<i>UV (365 nm), working distance 35 mm</i>	100-012071	716,00 €
RL40-120 PW	<i>pure white (5.600 K), working distance 120 mm</i>	100-012180	395,00 €
RL40-120 NW	<i>natural white (4.000 K), working distance 120 mm</i>	100-012230	395,00 €
RL40-120 UV395	<i>UV (395 nm), working distance 120 mm</i>	100-012297	556,00 €
RL40-120 UV385	<i>UV (385 nm), working distance 120 mm</i>	100-012293	609,00 €
RL40-120 UV365	<i>UV (365 nm), working distance 120 mm</i>	100-012240	716,00 €



Next Gen

Ring Lights Next Gen

RL66d <Diffuse/>



Applications
Microscopy

Accessories
Reducing Rings [Page 63](#)

Luminous flux	approx. 550 lm
Color temperature	5.700 K (pure white)
Color rendering index (CRI)	≥ 90
LED life span	54.000 h (L70, according to manufacturer)
Brightness control	sensitive adjusting 0 - 100% with memory function
Power consumption	approx. 9 W
Input power supply	100 - 240 V AC, 50/60 Hz
Output power supply	24 V DC, 1 A
Height	30 mm
Outer diameter	99 mm
Inner diameter	66 mm
Clamping diameter	max. 66 mm
Inner thread	M67 × 0,75
Length supply line	0,85 m
Length power cord	1,40 m
Material	anodized aluminium
Color	black
Weight	approx. 250 g
Dimensions control unit (l × w × h)	78 mm × 38 mm × 21 mm

Versions

RL66d	<i>pure white (5.700 K), diffuse</i>	100-012429	725,00 €
-------	--------------------------------------	------------	----------



Next Gen

Ring Lights Next Gen

RL66 Series <Standard/>



Working distance	45 mm - 180 mm
Nominal working distance	approx. 80 mm
Light spot diameter (on nominal working distance)	approx. 50 mm
Number of LEDs	8
Color rendering index (CRI)	≥ 95
LED life span	54.000 h (L70, according to manufacturer)
Brightness control	sensitive adjusting 0 - 100% with memory function
Power consumption	approx. 12 W
Input power supply	100 - 240 V AC, 50/60 Hz
Output power supply	24 V DC, 1 A
Height	26 mm
Outer diameter	99 mm
Inner diameter	66 mm
Clamping diameter	max. 66 mm
Inner thread	M67 × 0,75
Length supply line	0,85 m
Length power cord	1,40 m
Material	anodized aluminium
Color	black
Weight	approx. 250 g
Dimensions control unit (l × w × h)	78 mm × 38 mm × 21 mm



Applications

Microscopy

Accessories

Protective Glass [Page 63](#)

Polarisation Filter Set [Page 63](#)

Diffusor Disc [Page 63](#)

Reducing Rings [Page 63](#)

Versions

RL66-80-f PW	<i>pure white (5.600 K), fix supply line</i>	100-012953	392,00 €
RL66-80-f NW	<i>natural white (4.000 K), fix supply line</i>	100-012954	392,00 €
RL66-80 PW	<i>pure white (5.600 K)</i>	100-012212	427,00 €
RL66-80 NW	<i>natural white (4.000 K)</i>	100-012234	427,00 €
RL66-80 UV395	<i>UV (395 nm)</i>	100-012298	588,00 €
RL66-80 UV385	<i>UV (385 nm)</i>	100-012294	641,00 €
RL66-80 UV365	<i>UV (365 nm)</i>	100-012075	748,00 €



Next Gen

Ring Lights Next Gen

RL81 Series <Standard/>



Applications

Microscopy
Machine Vision

Accessories

Protective Glass [Page 63](#)
Polarisation Filter Set [Page 63](#)
Diffusor Disc [Page 63](#)
Reducing Rings [Page 63](#)

Working distance	40 mm - 150 mm
Nominal working distance	approx. 75 mm
Light spot diameter (on nominal working distance)	approx. 45 mm
Number of LEDs	8
Color rendering index (CRI)	≥ 95
LED life span	54.000 h (L70, according to manufacturer)
Brightness control	sensitive adjusting 0 - 100% with memory function
Power consumption	approx. 12 W
Input power supply	100 - 240 V AC, 50/60 Hz
Output power supply	24 V DC, 1 A
Height	26 mm
Outer diameter	110 mm
Inner diameter	75 mm
Clamping diameter	max. 81 mm
Inner thread	M77 × 0,75
Length supply line	0,85 m
Length power cord	1,40 m
Material	anodized aluminium
Color	black
Weight	approx. 250 g
Dimensions control unit (l × w × h)	78 mm × 38 mm × 21 mm

Versions

RL81-75 PW	<i>pure white (5.600 K)</i>	100-012213	470,00 €
RL81-75 NW	<i>natural white (4.000 K)</i>	100-012237	470,00 €
RL81-75 UV395	<i>UV (395 nm)</i>	100-012299	631,00 €
RL81-75 UV385	<i>UV (385 nm)</i>	100-012295	684,00 €
RL81-75 UV365	<i>UV (365 nm)</i>	100-012081	791,00 €



Next Gen

Ring Lights Next Gen

RL40Sd <Diffuse Segment/>



Luminous flux	approx. 300 lm
Color temperature	5.700 K (pure white)
Color rendering index (CRI)	≥ 90
LED life span	54.000 h (L70, according to manufacturer)
Brightness control	continuous adjusting 0 - 100% (4 segments with different rotation modes)
Power consumption	approx. 3,5 W
Input power supply	100 - 240 V AC, 50/60 Hz
Output power supply	24 V DC, 1 A
Height	27,6 mm
Outer diameter	58 mm
Inner diameter	30 mm
Clamping diameter	max. 40 mm
Inner thread	M30,5 × 0,5
Length supply line	0,85 m
Length power cord	1,40 m
Material	anodized aluminium
Color	black
Weight	approx. 94 g
Dimensions control unit (l × w × h)	135 mm × 70 mm × 44 mm



Applications

Microscopy
Machine Vision

Accessories

Diffusor Disc [Page 63](#)
Reducing Rings [Page 63](#)

Versions

RL40Sd	<i>pure white (5.700 K), diffuse</i>	100-012934	719,00 €
--------	--------------------------------------	------------	----------



Next Gen

Ring Lights Next Gen

RL40S Series <Segment/>



Number of LEDs	8
Color rendering index (CRI)	≥ 95
LED life span	54.000 h (L70, according to manufacturer)
Brightness control	continuous adjusting 0 - 100% (4 segments with different rotation modes)
Power consumption	approx. 6 W
Input power supply	100 - 240 V AC, 50/60 Hz
Output power supply	24 V DC, 1 A
Height	25,1 mm
Outer diameter	58 mm
Inner diameter	30 mm
Clamping diameter	max. 40 mm
Inner thread	M30,5 × 0,5
Length supply line	0,85 m
Length power cord	1,40 m
Material	anodized aluminium
Color	black
Weight	approx. 125 g
Dimensions control unit (l × w × h)	135 mm × 70 mm × 44 mm



Applications

Microscopy
Machine Vision

Accessories

Diffusor Disc [Page 63](#)
Reducing Rings [Page 63](#)

Versions

RL40S-35 PW	<i>pure white (5.600 K), working distance 35 mm</i>	100-012215	545,00 €
RL40S-35 NW	<i>natural white (4.000 K), working distance 35 mm</i>	100-012232	545,00 €
RL40S-120 PW	<i>pure white (5.600 K), working distance 120 mm</i>	100-012210	545,00 €
RL40S-120 NW	<i>natural white (4.000 K), working distance 120 mm</i>	100-012233	545,00 €



Ring Lights Next Gen

RL66Sd <Diffuse Segment/>



Applications
Microscopy

Accessories

Reducing Rings [Page 63](#)

Luminous flux	approx. 550 lm
Color temperature	5.700 K (pure white)
Color rendering index (CRI)	≥ 90
LED life span	54.000 h (L70, according to manufacturer)
Brightness control	continuous adjusting 0 - 100% (4 segments with different rotation modes)
Power consumption	approx. 9 W
Input power supply	100 - 240 V AC, 50/60 Hz
Output power supply	24 V DC, 1 A
Height	30 mm
Outer diameter	99 mm
Inner diameter	66 mm
Clamping diameter	max. 66 mm
Inner thread	M67 × 0,75
Length supply line	0,85 m
Length power cord	1,40 m
Material	anodized aluminium
Color	black
Weight	approx. 250 g
Dimensions control unit (l × w × h)	135 mm × 70 mm × 44 mm

Versions

RL66Sd	<i>pure white (5.700 K), diffuse</i>	100-012826	835,00 €
--------	--------------------------------------	------------	----------



Next Gen

Ring Lights Next Gen

RL66S Series <Segment/>



Applications

Microscopy

Accessories

Protective Glass [Page 63](#)

Polarisation Filter Set [Page 63](#)

Diffusor Disc [Page 63](#)

Reducing Rings [Page 63](#)

Working distance	45 mm - 180 mm
Nominal working distance	approx. 80 mm
Light spot diameter (on nominal working distance)	approx. 50 mm
Number of LEDs	8
Color rendering index (CRI)	≥ 95
LED life span	54.000 h (L70, according to manufacturer)
Brightness control	continuous adjusting 0 - 100% (4 segments with different rotation modes)
Power consumption	approx. 12 W
Input power supply	100 - 240 V AC, 50/60 Hz
Output power supply	24 V DC, 1 A
Height	26 mm
Outer diameter	99 mm
Inner diameter	66 mm
Clamping diameter	max. 66 mm
Inner thread	M67 × 0,75
Length supply line	0,85 m
Length power cord	1,40 m
Material	anodized aluminium
Color	black
Weight	approx. 250 g
Dimensions control unit (l × w × h)	135 mm × 70 mm × 44 mm

Versions

RL66S-80-f PW	<i>pure white (5.600 K), fix supply line</i>	100-012955	542,00 €
RL66S-80-f NW	<i>natural white (4.000 K), fix supply line</i>	100-012956	542,00 €
RL66S-80 PW	<i>pure white (5.600 K)</i>	100-012235	577,00 €
RL66S-80 NW	<i>natural white (4.000 K)</i>	100-012236	577,00 €



Next Gen

Ring Lights Next Gen

RL81S Series <Segment/>



Applications

Microscopy
Machine Vision

Accessories

Protective Glass [Page 63](#)
Polarisation Filter Set [Page 63](#)
Diffusor Disc [Page 63](#)
Reducing Rings [Page 64](#)

Working distance	40 mm - 150 mm
Nominal working distance	approx. 75 mm
Light spot diameter (on nominal working distance)	approx. 45 mm
Number of LEDs	8
Color rendering index (CRI)	≥ 95
LED life span	54.000 h (L70, according to manufacturer)
Brightness control	continuous adjusting 0 - 100% (4 segments with different rotation modes)
Power consumption	approx. 12 W
Input power supply	100 - 240 V AC, 50/60 Hz
Output power supply	24 V DC, 1 A
Height	26 mm
Outer diameter	110 mm
Inner diameter	75 mm
Clamping diameter	max. 81 mm
Inner thread	M77 × 0,75
Length supply line	0,85 m
Length power cord	1,40 m
Material	anodized aluminium
Color	black
Weight	approx. 250 g
Dimensions control unit (l × w × h)	135 mm × 70 mm × 44 mm

Versions

RL81S-75 PW	<i>pure white (5.600 K)</i>	100-012238	620,00 €
RL81S-75 NW	<i>natural white (4.000 K)</i>	100-012239	620,00 €



Next Gen

Ring Lights Next Gen

RL66M Series <Multiple Colors/>



Working distance	45 mm - 180 mm
Nominal working distance	approx. 80 mm
Light spot diameter (on nominal working distance)	approx. 50 mm
Number of LEDs	16
Color rendering index (CRI)	≥ 95
LED life span	54.000 h (L70, according to manufacturer)
Brightness control	continuous adjusting 0 - 100% (2 switchable light colors)
Power consumption	approx. 12 W
Input power supply	100 - 240 V AC, 50/60 Hz
Output power supply	24 V DC, 1 A
Height	26 mm
Outer diameter	99 mm
Inner diameter	66 mm
Clamping diameter	max. 66 mm
Inner thread	M67 × 0,75
Length supply line	0,85 m
Length power cord	1,40 m
Material	anodized aluminium
Color	black
Weight	approx. 250 g
Dimensions control unit (l × w × h)	135 mm × 70 mm × 44 mm



Applications

Microscopy

Accessories

Protective Glass [Page 63](#)

Polarisation Filter Set [Page 63](#)

Diffusor Disc [Page 63](#)

Reducing Rings [Page 63](#)

Versions

RL66M-80 G-B	<i>green (520 nm), blue (465 nm)</i>	100-013038	937,00 €
RL66M-80 PW-UV405	<i>pure white (5.600 K), UV405 (405 nm)</i>	100-013163	937,00 €
RL66M-80 PW-UV395	<i>pure white (5.600 K), UV405 (395 nm)</i>	100-013164	937,00 €
RL66M-80 PW-UV385	<i>pure white (5.600 K), UV405 (385 nm)</i>	100-013165	937,00 €
RL66M-80 PW-UV365	<i>pure white (5.600 K), UV405 (365 nm)</i>	100-013166	937,00 €
RL66M-80 NW-UV405	<i>natural white (4.000 K), UV405 (405 nm)</i>	100-013037	937,00 €



Next Gen

Ring Lights Classic

RL1 Series <Standard/>



Number of LEDs	16
LED life span	50.000 h (L70, according to manufacturer)
Brightness control	sensitive adjusting 0 - 100% with memory function
Power consumption	approx. 4 W
Input power supply	100 - 240 V AC, 50/60 Hz
Output power supply	24 V DC, 1 A
Height	25 mm
Outer diameter	44 mm
Inner diameter	20 mm
Clamping diameter	max. 26 mm
Inner thread	M21 × 0,75
Length supply line	0,85 m
Length power cord	1,40 m
Material	anodized aluminium
Color	titanium
Weight	approx. 60 g
Dimensions control unit (l × w × h)	78 mm × 38 mm × 21 mm



Applications

Microscopy
Machine Vision

Accessories

Diffuser Disc [Page 63](#)
Reducing Rings [Page 63](#)

Versions

RL1-10 PW	<i>pure white (6.500 K), working distance 5 mm - 25 mm (optimal 10 mm)</i>	100-009301	287,00 €
RL1-10 NW	<i>natural white (5.600 K), working distance 5 mm - 25 mm (optimal 10 mm)</i>	100-009302	287,00 €
RL1-10 WW	<i>warm white (3.500 K), working distance 5 mm - 25 mm (optimal 10 mm)</i>	100-009303	287,00 €
RL1-10 R	<i>red (620 nm), working distance 5 mm - 25 mm (optimal 10 mm)</i>	100-010621	320,00 €
RL1-10 G	<i>green (540 nm), working distance 5 mm - 25 mm (optimal 10 mm)</i>	100-010622	320,00 €
RL1-10 B	<i>blue (470 nm), working distance 5 mm - 25 mm (optimal 10 mm)</i>	100-010623	320,00 €
RL1-10 A	<i>amber (590 nm), working distance 5 mm - 25 mm (optimal 10 mm)</i>	100-010624	320,00 €
RL1-10 IR880	<i>IR (880 nm), working distance 5 mm - 25 mm (optimal 10 mm)</i>	100-010628	353,00 €
RL1-10 UV405	<i>UV (405 nm), working distance 5 mm - 25 mm (optimal 10 mm)</i>	100-010625	342,00 €
RL1-10 UV375	<i>UV (375 nm), working distance 5 mm - 25 mm (optimal 10 mm)</i>	100-010626	427,00 €
RL1-10 UV365	<i>UV (365 nm), working distance 5 mm - 25 mm (optimal 10 mm)</i>	100-010627	534,00 €
RL1-40 PW	<i>pure white (6.500 K), working distance 18 mm - 150 mm (optimal 40 mm)</i>	100-009304	287,00 €
RL1-40 NW	<i>natural white (5.600 K), working distance 18 mm - 150 mm (optimal 40 mm)</i>	100-009305	287,00 €
RL1-40 WW	<i>warm white (3.500 K), working distance 18 mm - 150 mm (optimal 40 mm)</i>	100-009306	287,00 €
RL1-40 R	<i>red (620 nm), working distance 18 mm - 150 mm (optimal 40 mm)</i>	100-010629	320,00 €
RL1-40 G	<i>green (540 nm), working distance 18 mm - 150 mm (optimal 40 mm)</i>	100-010630	320,00 €
RL1-40 B	<i>blue (470 nm), working distance 18 mm - 150 mm (optimal 40 mm)</i>	100-010631	320,00 €
RL1-40 A	<i>amber (590 nm), working distance 18 mm - 150 mm (optimal 40 mm)</i>	100-010632	320,00 €
RL1-40 IR880	<i>IR (880 nm), working distance 18 mm - 150 mm (optimal 40 mm)</i>	100-010636	353,00 €
RL1-40 UV405	<i>UV (405 nm), working distance 18 mm - 150 mm (optimal 40 mm)</i>	100-010633	342,00 €
RL1-40 UV375	<i>UV (375 nm), working distance 18 mm - 150 mm (optimal 40 mm)</i>	100-010634	427,00 €
RL1-40 UV365	<i>UV (365 nm), working distance 18 mm - 150 mm (optimal 40 mm)</i>	100-010635	534,00 €

Ring Lights Classic

RL2 Series <Standard/>



Number of LEDs	24
Brightness control	sensitive adjusting 0 - 100% with memory function
Power consumption	approx. 5 W
Input power supply	100 - 240 V AC, 50/60 Hz
Output power supply	24 V DC, 1 A
Height	25 mm
Outer diameter	58 mm
Inner diameter	35 mm
Clamping diameter	max. 40 mm
Inner thread	M35,5 × 0,5
Length supply line	0,85 m
Length power cord	1,40 m
Material	anodized aluminium
Color	titanium
Weight	approx. 60 g
Dimensions control unit (l × w × h)	78 mm × 38 mm × 21 mm



Applications

Microscopy
Machine Vision

Accessories

Diffuser Disc [Page 63](#)
Reducing Rings [Page 63](#)

Versions

RL2-25 PW	<i>pure white (6.500 K), working distance 15 mm - 50 mm (optimal 25 mm)</i>	100-009296	299,00 €
RL2-25 NW	<i>natural white (5.600 K), working distance 15 mm - 50 mm (optimal 25 mm)</i>	100-009283	299,00 €
RL2-25 WW	<i>warm white (3.500 K), working distance 15 mm - 50 mm (optimal 25 mm)</i>	100-009297	299,00 €
RL2-25 R	<i>red (620 nm), working distance 15 mm - 50 mm (optimal 25 mm)</i>	100-010647	331,00 €
RL2-25 G	<i>green (540 nm), working distance 15 mm - 50 mm (optimal 25 mm)</i>	100-010648	331,00 €
RL2-25 B	<i>blue (470 nm), working distance 15 mm - 50 mm (optimal 25 mm)</i>	100-010649	331,00 €
RL2-25 A	<i>amber (590 nm), working distance 15 mm - 50 mm (optimal 25 mm)</i>	100-010650	331,00 €
RL2-25 IR880	<i>IR (880 nm), working distance 15 mm - 50 mm (optimal 25 mm)</i>	100-010654	388,00 €
RL2-25 UV405	<i>UV (405 nm), working distance 15 mm - 50 mm (optimal 25 mm)</i>	100-010651	363,00 €
RL2-25 UV375	<i>UV (375 nm), working distance 15 mm - 50 mm (optimal 25 mm)</i>	100-010652	460,00 €
RL2-25 UV365	<i>UV (365 nm), working distance 15 mm - 50 mm (optimal 25 mm)</i>	100-010653	567,00 €
RL2-50 PW	<i>pure white (6.500 K), working distance 30 mm - 150 mm (optimal 50 mm)</i>	100-009298	299,00 €
RL2-50 NW	<i>natural white (5.600 K), working distance 30 mm - 150 mm (optimal 50 mm)</i>	100-009299	299,00 €
RL2-50 WW	<i>warm white (3.500 K), working distance 30 mm - 150 mm (optimal 50 mm)</i>	100-009300	299,00 €
RL2-50 R	<i>red (620 nm), working distance 30 mm - 150 mm (optimal 50 mm)</i>	100-010655	331,00 €
RL2-50 G	<i>green (540 nm), working distance 30 mm - 150 mm (optimal 50 mm)</i>	100-010656	331,00 €
RL2-50 B	<i>blue (470 nm), working distance 30 mm - 150 mm (optimal 50 mm)</i>	100-010657	331,00 €
RL2-50 A	<i>amber (590 nm), working distance 30 mm - 150 mm (optimal 50 mm)</i>	100-010658	331,00 €
RL2-50 IR880	<i>IR (880 nm), working distance 30 mm - 150 mm (optimal 50 mm)</i>	100-010662	388,00 €
RL2-50 UV405	<i>UV (405 nm), working distance 30 mm - 150 mm (optimal 50 mm)</i>	100-010659	363,00 €
RL2-50 UV375	<i>UV (375 nm), working distance 30 mm - 150 mm (optimal 50 mm)</i>	100-010660	460,00 €
RL2-50 UV365	<i>UV (365 nm), working distance 30 mm - 150 mm (optimal 50 mm)</i>	100-010661	567,00 €

Ring Lights Classic



RL4 Series <Standard/>



Working distance	50 mm - 150 mm
Nominal working distance	approx. 80 mm
Number of LEDs	48
Brightness control	sensitive adjusting 0 - 100% with memory function
Power consumption	approx. 7 W
Input power supply	100 - 240 V AC, 50/60 Hz
Output power supply	24 V DC, 1 A
Height	25,5 mm
Outer diameter	99 mm
Inner diameter	66 mm
Inner thread	M67 × 0,75
Length supply line	0,85 m
Length power cord	1,40 m
Material	anodized aluminium
Color	black
Weight	approx. 230 g
Dimensions control unit (l × w × h)	78 mm × 38 mm × 21 mm

Classic



Applications

Microscopy

Accessories

Protective Glass	Page 63
Polarisation Filter Set	Page 63
Diffusor Disc	Page 63
Reducing Rings	from Page 63

Versions

RL4-66-f PW	<i>pure white (6.500 K), fix supply line, clamping diameter max. 66 mm</i>	100-012929	339,00 €
RL4-66-f NW	<i>natural white (5.600 K), fix supply line, clamping diameter max. 66 mm</i>	100-012950	339,00 €
RL4-66 PW	<i>pure white (6.500 K), clamping diameter max. 66 mm</i>	100-010127	374,00 €
RL4-66 NW	<i>natural white (5.600 K), clamping diameter max. 66 mm</i>	100-010128	374,00 €
RL4-66 WW	<i>warm white (3.500 K), clamping diameter max. 66 mm</i>	100-010679	374,00 €
RL4-66 R	<i>red (620 nm), clamping diameter max. 66 mm</i>	100-010129	415,00 €
RL4-66 G	<i>green (540 nm), clamping diameter max. 66 mm</i>	100-010130	415,00 €
RL4-66 B	<i>blue (470 nm), clamping diameter max. 66 mm</i>	100-010131	415,00 €
RL4-66 A	<i>amber (590 nm), clamping diameter max. 66 mm</i>	100-010677	415,00 €
RL4-66 IR880	<i>IR (880 nm), clamping diameter max. 66 mm</i>	100-010135	447,00 €
RL4-66 UV405	<i>UV (405 nm), clamping diameter max. 66 mm</i>	100-010132	427,00 €
RL4-66 UV375	<i>UV (375 nm), clamping diameter max. 66 mm</i>	100-010133	748,00 €
RL4-66 UV365	<i>UV (365 nm), clamping diameter max. 66 mm</i>	100-010134	962,00 €

Ring Lights Classic



Versions			
RL4-74 PW	<i>pure white (6.500 K), clamping diameter max. 74 mm</i>	100-010138	374,00 €
RL4-74 NW	<i>natural white (5.600 K), clamping diameter max. 74 mm</i>	100-010139	374,00 €
RL4-74 WW	<i>warm white (3.500 K), clamping diameter max. 74 mm</i>	100-010678	374,00 €
RL4-74 R	<i>red (620 nm), clamping diameter max. 74 mm</i>	100-010140	415,00 €
RL4-74 G	<i>green (540 nm), clamping diameter max. 74 mm</i>	100-010141	415,00 €
RL4-74 B	<i>blue (470 nm), clamping diameter max. 74 mm</i>	100-010142	415,00 €
RL4-74 A	<i>amber (590 nm), clamping diameter max. 74 mm</i>	100-010680	415,00 €
RL4-74 IR880	<i>IR (880 nm), clamping diameter max. 74 mm</i>	100-010146	447,00 €
RL4-74 UV405	<i>UV (405 nm), clamping diameter max. 74 mm</i>	100-010143	427,00 €
RL4-74 UV375	<i>UV (375 nm), clamping diameter max. 74 mm</i>	100-010144	748,00 €
RL4-74 UV365	<i>UV (365 nm), clamping diameter max. 74 mm</i>	100-010145	962,00 €

Classic

Ring Lights Classic

RL5 Series <Standard/>



Working distance	50 mm - 140 mm
Nominal working distance	approx. 75 mm
Number of LEDs	56
Brightness control	sensitive adjusting 0 - 100% with memory function
Power consumption	approx. 8 W
Input power supply	100 - 240 V AC, 50/60 Hz
Output power supply	24 V DC, 1 A
Height	25,5 mm
Outer diameter	110 mm
Inner diameter	81 mm
Inner thread	M82 × 0,75
Length supply line	0,85 m
Length power cord	1,40 m
Material	anodized aluminium
Color	black
Weight	approx. 220 g
Dimensions control unit (l × w × h)	78 mm × 38 mm × 21 mm



Applications

Microscopy

Accessories

Protective Glass	Page 63
Polarisation Filter Set	Page 63
Diffusor Disc	Page 63
Reducing Rings	Page 64

Versions

RL5-81 PW	<i>pure white (6.500 K), clamping diameter max. 81 mm</i>	100-010156	460,00 €
RL5-81 NW	<i>natural white (5.600 K), clamping diameter max. 81 mm</i>	100-010157	460,00 €
RL5-81 WW	<i>warm white (3.500 K), clamping diameter max. 81 mm</i>	100-010691	460,00 €
RL5-81 R	<i>red (620 nm), clamping diameter max. 81 mm</i>	100-010158	510,00 €
RL5-81 G	<i>green (540 nm), clamping diameter max. 81 mm</i>	100-010159	510,00 €
RL5-81 B	<i>blue (470 nm), clamping diameter max. 81 mm</i>	100-010160	510,00 €
RL5-81 A	<i>amber (590 nm), clamping diameter max. 81 mm</i>	100-010692	510,00 €
RL5-81 IR880	<i>IR (880 nm), clamping diameter max. 81 mm</i>	100-010164	529,00 €
RL5-81 UV405	<i>UV (405 nm), clamping diameter max. 81 mm</i>	100-010161	513,00 €
RL5-81 UV375	<i>UV (375 nm), clamping diameter max. 81 mm</i>	100-010162	727,00 €
RL5-81 UV365	<i>UV (365 nm), clamping diameter max. 81 mm</i>	100-010163	1.048,00 €
RL5-88 PW	<i>pure white (6.500 K), clamping diameter max. 88 mm</i>	100-010167	460,00 €
RL5-88 NW	<i>natural white (5.600 K), clamping diameter max. 88 mm</i>	100-010168	460,00 €
RL5-88 WW	<i>warm white (3.500 K), clamping diameter max. 88 mm</i>	100-010694	460,00 €
RL5-88 R	<i>red (620 nm), clamping diameter max. 88 mm</i>	100-010169	510,00 €
RL5-88 G	<i>green (540 nm), clamping diameter max. 88 mm</i>	100-010170	510,00 €
RL5-88 B	<i>blue (470 nm), clamping diameter max. 88 mm</i>	100-010171	510,00 €
RL5-88 A	<i>amber (590 nm), clamping diameter max. 88 mm</i>	100-010695	510,00 €
RL5-88 IR880	<i>IR (880 nm), clamping diameter max. 88 mm</i>	100-010175	529,00 €
RL5-88 UV405	<i>UV (405 nm), clamping diameter max. 88 mm</i>	100-010172	513,00 €
RL5-88 UV375	<i>UV (375 nm), clamping diameter max. 88 mm</i>	100-010173	727,00 €
RL5-88 UV365	<i>UV (365 nm), clamping diameter max. 88 mm</i>	100-010174	1.048,00 €

Ring Lights Classic

RL1-S40 Series <Segment/>



Number of LEDs	16
LED life span	50.000 h (L70, according to manufacturer)
Brightness control	continuous adjusting 0 - 100% (4 segments with different rotation modes)
Power consumption	approx. 4 W
Input power supply	100 - 240 V AC, 50/60 Hz
Output power supply	24 V DC, 1 A
Height	25 mm
Outer diameter	44 mm
Inner diameter	20 mm
Clamping diameter	max. 26 mm
Inner thread	M21 x 0,75
Length supply line	0,85 m
Length power cord	1,40 m
Material	anodized aluminium
Color	titanium
Weight	approx. 60 g
Dimensions control unit (l x w x h)	135 mm x 70 mm x 44 mm



Applications

Microscopy
Machine Vision

Accessories

Diffuser Disc [Page 63](#)
Reducing Rings [Page 63](#)

Versions

RL1-10-S40 PW	<i>pure white (6.500 K), working distance 5 mm - 25 mm (optimal 10 mm)</i>	100-011949	452,00 €
RL1-10-S40 NW	<i>natural white (5.600 K), working distance 5 mm - 25 mm (optimal 10 mm)</i>	100-011948	452,00 €
RL1-10-S40 WW	<i>warm white (3.500 K), working distance 5 mm - 25 mm (optimal 10 mm)</i>	100-011947	452,00 €
RL1-10-S40 R	<i>red (620 nm), working distance 5 mm - 25 mm (optimal 10 mm)</i>	100-011946	512,00 €
RL1-10-S40 G	<i>green (540 nm), working distance 5 mm - 25 mm (optimal 10 mm)</i>	100-011945	512,00 €
RL1-10-S40 B	<i>blue (470 nm), working distance 5 mm - 25 mm (optimal 10 mm)</i>	100-011944	512,00 €
RL1-10-S40 A	<i>amber (590 nm), working distance 5 mm - 25 mm (optimal 10 mm)</i>	100-011943	512,00 €
RL1-40-S40 PW	<i>pure white (6.500 K), working distance 18 mm - 150 mm (optimal 40 mm)</i>	100-011956	452,00 €
RL1-40-S40 NW	<i>natural white (5.600 K), working distance 18 mm - 150 mm (optimal 40 mm)</i>	100-011955	452,00 €
RL1-40-S40 WW	<i>warm white (3.500 K), working distance 18 mm - 150 mm (optimal 40 mm)</i>	100-011954	452,00 €
RL1-40-S40 R	<i>red (620 nm), working distance 18 mm - 150 mm (optimal 40 mm)</i>	100-011953	512,00 €
RL1-40-S40 G	<i>green (540 nm), working distance 18 mm - 150 mm (optimal 40 mm)</i>	100-011952	512,00 €
RL1-40-S40 B	<i>blue (470 nm), working distance 18 mm - 150 mm (optimal 40 mm)</i>	100-011951	512,00 €
RL1-40-S40 A	<i>amber (590 nm), working distance 18 mm - 150 mm (optimal 40 mm)</i>	100-011950	512,00 €



Classic

Ring Lights Classic

RL2-S40 Series <Segment/>



Number of LEDs	24
LED life span	50.000 h (L70, according to manufacturer)
Brightness control	continuous adjusting 0 - 100% (4 segments with different rotation modes)
Power consumption	approx. 5 W
Input power supply	100 - 240 V AC, 50/60 Hz
Output power supply	24 V DC, 1 A
Height	25 mm
Outer diameter	58 mm
Inner diameter	35 mm
Clamping diameter	max. 40 mm
Inner thread	M35,5 x 0,5
Length supply line	0,85 m
Length power cord	1,40 m
Material	anodized aluminium
Color	titanium
Weight	approx. 60 g
Dimensions control unit (l x w x h)	135 mm x 70 mm x 44 mm



Applications

Microscopy
Machine Vision

Accessories

Diffusor Disc [Page 63](#)
Reducing Rings [Page 63](#)

Versions

RL2-25-S40 PW	<i>pure white (6.500 K), working distance 15 mm - 50 mm (optimal 25 mm)</i>	100-011963	462,00 €
RL2-25-S40 NW	<i>natural white (5.600 K), working distance 15 mm - 50 mm (optimal 25 mm)</i>	100-011962	462,00 €
RL2-25-S40 WW	<i>warm white (3.500 K), working distance 15 mm - 50 mm (optimal 25 mm)</i>	100-011961	462,00 €
RL2-25-S40 R	<i>red (620 nm), working distance 15 mm - 50 mm (optimal 25 mm)</i>	100-011960	523,00 €
RL2-25-S40 G	<i>green (540 nm), working distance 15 mm - 50 mm (optimal 25 mm)</i>	100-011959	523,00 €
RL2-25-S40 B	<i>blue (470 nm), working distance 15 mm - 50 mm (optimal 25 mm)</i>	100-011958	523,00 €
RL2-25-S40 A	<i>amber (590 nm), working distance 15 mm - 50 mm (optimal 25 mm)</i>	100-011957	523,00 €
RL2-50-S40 PW	<i>pure white (6.500 K), working distance 30 mm - 150 mm (optimal 50 mm)</i>	100-011970	462,00 €
RL2-50-S40 NW	<i>natural white (5.600 K), working distance 30 mm - 150 mm (optimal 50 mm)</i>	100-011969	462,00 €
RL2-50-S40 WW	<i>warm white (3.500 K), working distance 30 mm - 150 mm (optimal 50 mm)</i>	100-011968	462,00 €
RL2-50-S40 R	<i>red (620 nm), working distance 30 mm - 150 mm (optimal 50 mm)</i>	100-011967	523,00 €
RL2-50-S40 G	<i>green (540 nm), working distance 30 mm - 150 mm (optimal 50 mm)</i>	100-011966	523,00 €
RL2-50-S40 B	<i>blue (470 nm), working distance 30 mm - 150 mm (optimal 50 mm)</i>	100-011965	523,00 €
RL2-50-S40 A	<i>amber (590 nm), working distance 30 mm - 150 mm (optimal 50 mm)</i>	100-011964	523,00 €



Classic

Ring Lights Classic

RL4-S40 Series <Segment/>



Working distance	50 mm - 150 mm
Nominal working distance	approx. 80 mm
Number of LEDs	48
LED life span	50.000 h (L70, according to manufacturer)
Brightness control	continuous adjusting 0 - 100% (4 segments with different rotation modes)
Power consumption	approx. 7 W
Input power supply	100 - 240 V AC, 50/60 Hz
Output power supply	24 V DC, 1 A
Height	25,5 mm
Outer diameter	99 mm
Inner diameter	66 mm
Inner thread	M67 × 0,75
Length supply line	0,85 m
Length power cord	1,40 m
Material	anodized aluminium
Color	black
Weight	approx. 230 g
Dimensions control unit (l × w × h)	135 mm × 70 mm × 44 mm



Applications

Microscopy

Accessories

Protective Glass	Page 63
Polarisation Filter Set	Page 63
Diffusor Disc	Page 63
Reducing Rings	from Page 63

Versions

RL4-66-S40-f PW	<i>pure white (6.500 K), fix supply line, clamping diameter max. 66 mm</i>	100-012951	488,00 €
RL4-66-S40-f NW	<i>natural white (5.600 K), fix supply line, clamping diameter max. 66 mm</i>	100-012952	488,00 €
RL4-66-S40 PW	<i>pure white (6.500 K), clamping diameter max. 66 mm</i>	100-011595	524,00 €
RL4-66-S40 NW	<i>natural white (5.600 K), clamping diameter max. 66 mm</i>	100-011671	524,00 €
RL4-66-S40 WW	<i>warm white (3.500 K), clamping diameter max. 66 mm</i>	100-011692	524,00 €
RL4-66-S40 R	<i>red (620 nm), clamping diameter max. 66 mm</i>	100-011693	593,00 €
RL4-66-S40 G	<i>green (540 nm), clamping diameter max. 66 mm</i>	100-011694	593,00 €
RL4-66-S40 B	<i>blue (470 nm), clamping diameter max. 66 mm</i>	100-011695	593,00 €
RL4-66-S40 A	<i>amber (590 nm), clamping diameter max. 66 mm</i>	100-011696	593,00 €
RL4-74-S40 PW	<i>pure white (6.500 K), clamping diameter max. 74 mm</i>	100-011697	524,00 €
RL4-74-S40 NW	<i>natural white (5.600 K), clamping diameter max. 74 mm</i>	100-011698	524,00 €
RL4-74-S40 WW	<i>warm white (3.500 K), clamping diameter max. 74 mm</i>	100-011699	524,00 €
RL4-74-S40 R	<i>red (620 nm), clamping diameter max. 74 mm</i>	100-011700	593,00 €
RL4-74-S40 G	<i>green (540 nm), clamping diameter max. 74 mm</i>	100-011701	593,00 €
RL4-74-S40 B	<i>blue (470 nm), clamping diameter max. 74 mm</i>	100-012036	593,00 €
RL4-74-S40 A	<i>amber (590 nm), clamping diameter max. 74 mm</i>	100-011702	593,00 €



Classic

Ring Lights Classic

RL5-S40 Series <Segment/>



Working distance	50 mm - 140 mm
Nominal working distance	approx. 75 mm
Number of LEDs	56
LED life span	50.000 h (L70, according to manufacturer)
Brightness control	continuous adjusting 0 - 100% (4 segments with different rotation modes)
Power consumption	approx. 8 W
Input power supply	100 - 240 V AC, 50/60 Hz
Output power supply	12 V DC, 1,5 A
Height	25,5 mm
Outer diameter	110 mm
Inner diameter	81 mm
Inner thread	M82 × 0,75
Length supply line	0,85 m
Length power cord	1,40 m
Material	anodized aluminium
Color	black
Weight	approx. 220 g
Dimensions control unit (l × w × h)	135 mm × 70 mm × 44 mm



Applications

Microscopy

Accessories

Protective Glass	Page 63
Polarisation Filter Set	Page 63
Diffusor Disc	Page 63
Reducing Rings	Page 64

Versions

RL5-81-S40 PW	<i>pure white (6.500 K), clamping diameter max. 81 mm</i>	100-011977	577,00 €
RL5-81-S40 NW	<i>natural white (5.600 K), clamping diameter max. 81 mm</i>	100-011976	577,00 €
RL5-81-S40 WW	<i>warm white (3.500 K), clamping diameter max. 81 mm</i>	100-011975	577,00 €
RL5-81-S40 R	<i>red (620 nm), clamping diameter max. 81 mm</i>	100-011974	653,00 €
RL5-81-S40 G	<i>green (540 nm), clamping diameter max. 81 mm</i>	100-011973	653,00 €
RL5-81-S40 B	<i>blue (470 nm), clamping diameter max. 81 mm</i>	100-011972	653,00 €
RL5-81-S40 A	<i>amber (590 nm), clamping diameter max. 81 mm</i>	100-011971	653,00 €
RL5-88-S40 PW	<i>pure white (6.500 K), clamping diameter max. 88 mm</i>	100-011984	577,00 €
RL5-88-S40 NW	<i>natural white (5.600 K), clamping diameter max. 88 mm</i>	100-011983	577,00 €
RL5-88-S40 WW	<i>warm white (3.500 K), clamping diameter max. 88 mm</i>	100-011982	577,00 €
RL5-88-S40 R	<i>red (620 nm), clamping diameter max. 88 mm</i>	100-011981	653,00 €
RL5-88-S40 G	<i>green (540 nm), clamping diameter max. 88 mm</i>	100-011980	653,00 €
RL5-88-S40 B	<i>blue (470 nm), clamping diameter max. 88 mm</i>	100-011979	653,00 €
RL5-88-S40 A	<i>amber (590 nm), clamping diameter max. 88 mm</i>	100-011978	653,00 €



Classic

Ring Lights Power Line



RL12 Series <Standard/>



Number of LEDs	12 × Power LED
Brightness control	sensitive adjusting 0 - 100% with memory function
Power consumption	approx. 15 W
Input power supply	100 - 240 V AC, 50/60 Hz
Output power supply	24 V DC, 1 A
Height	42 mm
Outer diameter	130 mm
Inner diameter	66 mm
Clamping diameter	max. 66 mm
Inner thread	M67 × 0,75
Length supply line	0,85 m
Length power cord	1,40 m
Material	anodized aluminium
Color	titanium and black
Weight	approx. 750 g
Dimensions control unit (l × w × h)	78 mm × 38 mm × 21 mm



Applications

Microscopy
Machine Vision
Machine Lamps

Accessories

Protective Glass [Page 63](#)
Polarisation Filter Set [Page 63](#)
Diffusor Disc [Page 63](#)
Reducing Rings [Page 63](#)

Versions

RL12-25f PW	<i>pure white (5.700 K), working distance 40 mm - 220 mm (optimal 100 mm)</i>	100-008090	767,00 €
RL12-25f NW	<i>natural white (4.000 K), working distance 40 mm - 220 mm (optimal 100 mm)</i>	100-008091	767,00 €
RL12-25f WW	<i>warm white (3.000 K), working distance 40 mm - 220 mm (optimal 100 mm)</i>	100-008092	767,00 €
RL12-25f R	<i>red (625 nm), working distance 40 mm - 220 mm (optimal 100 mm)</i>	100-008093	850,00 €
RL12-25f G	<i>green (528 nm), working distance 40 mm - 220 mm (optimal 100 mm)</i>	100-008094	850,00 €
RL12-25f B	<i>blue (470 nm), working distance 40 mm - 220 mm (optimal 100 mm)</i>	100-008095	850,00 €
RL12-25f A	<i>amber (590 nm), working distance 40 mm - 220 mm (optimal 100 mm)</i>	100-008096	850,00 €
RL12-25s PW	<i>pure white (5.700 K), working distance 45 mm - 260 mm (optimal 100 mm)</i>	100-007700	767,00 €
RL12-25s NW	<i>natural white (4.000 K), working distance 45 mm - 260 mm (optimal 100 mm)</i>	100-007701	767,00 €
RL12-25s WW	<i>warm white (3.000 K), working distance 45 mm - 260 mm (optimal 100 mm)</i>	100-007702	767,00 €
RL12-25s R	<i>red (625 nm), working distance 45 mm - 260 mm (optimal 100 mm)</i>	100-007703	850,00 €
RL12-25s G	<i>green (528 nm), working distance 45 mm - 260 mm (optimal 100 mm)</i>	100-007704	850,00 €
RL12-25s B	<i>blue (470 nm), working distance 45 mm - 260 mm (optimal 100 mm)</i>	100-007705	850,00 €
RL12-25s A	<i>amber (590 nm), working distance 45 mm - 260 mm (optimal 100 mm)</i>	100-007706	850,00 €
RL12-25 UV405	<i>UV (405 nm), working distance 45 mm - 260 mm (optimal 100 mm)</i>	100-010747	1.746,00 €
RL12-25 UV365	<i>UV (365 nm), working distance 45 mm - 260 mm (optimal 100 mm)</i>	100-010749	2.588,00 €
RL12-18f PW	<i>pure white (5.700 K), working distance 50 mm - 800 mm (optimal 140 mm)</i>	100-007710	767,00 €
RL12-18f NW	<i>natural white (4.000 K), working distance 50 mm - 800 mm (optimal 140 mm)</i>	100-007711	767,00 €
RL12-18f WW	<i>warm white (3.000 K), working distance 50 mm - 800 mm (optimal 140 mm)</i>	100-007712	767,00 €

Ring Lights Power Line



Versions			
RL12-18f R	<i>red (625 nm), working distance 50 mm - 800 mm (optimal 140 mm)</i>	100-007713	850,00 €
RL12-18f G	<i>green (528 nm), working distance 50 mm - 800 mm (optimal 140 mm)</i>	100-007714	850,00 €
RL12-18f B	<i>blue (470 nm), working distance 50 mm - 800 mm (optimal 140 mm)</i>	100-007715	850,00 €
RL12-18f A	<i>amber (590 nm), working distance 50 mm - 800 mm (optimal 140 mm)</i>	100-007716	850,00 €
RL12-18s WW	<i>warm white (3.000 K), working distance 90 mm - 180 mm (optimal 140 mm)</i>	100-007692	767,00 €
RL12-18s PW	<i>pure white (5.700 K), working distance 90 mm - 180 mm (optimal 140 mm)</i>	100-007690	767,00 €
RL12-18s NW	<i>natural white (4.000 K), working distance 90 mm - 180 mm (optimal 140 mm)</i>	100-007691	767,00 €
RL12-18s R	<i>red (625 nm), working distance 90 mm - 180 mm (optimal 140 mm)</i>	100-007693	850,00 €
RL12-18s G	<i>green (528 nm), working distance 90 mm - 180 mm (optimal 140 mm)</i>	100-007694	850,00 €
RL12-18s B	<i>blue (470 nm), working distance 90 mm - 180 mm (optimal 140 mm)</i>	100-007695	850,00 €
RL12-18s A	<i>amber (590 nm), working distance 90 mm - 180 mm (optimal 140 mm)</i>	100-007696	850,00 €
RL12-18 UV405	<i>UV (405 nm), working distance 90 mm - 180 mm (optimal 140 mm)</i>	100-010750	1.746,00 €
RL12-18 UV365	<i>UV (365 nm), working distance 90 mm - 180 mm (optimal 140 mm)</i>	100-010752	2.588,00 €
RL12-10s PW	<i>pure white (5.700 K), working distance 150 mm - 500 mm (optimal 270 mm)</i>	100-008070	767,00 €
RL12-10s NW	<i>natural white (4.000 K), working distance 150 mm - 500 mm (optimal 270 mm)</i>	100-008071	767,00 €
RL12-10s WW	<i>warm white (3.000 K), working distance 150 mm - 500 mm (optimal 270 mm)</i>	100-008072	767,00 €
RL12-10s R	<i>red (625 nm), working distance 150 mm - 500 mm (optimal 270 mm)</i>	100-008073	850,00 €
RL12-10s G	<i>green (528 nm), working distance 150 mm - 500 mm (optimal 270 mm)</i>	100-008074	850,00 €
RL12-10s B	<i>blue (470 nm), working distance 150 mm - 500 mm (optimal 270 mm)</i>	100-008075	850,00 €
RL12-10s A	<i>amber (590 nm), working distance 150 mm - 500 mm (optimal 270 mm)</i>	100-008076	850,00 €
RL12-10 UV405	<i>UV (405 nm), working distance 150 mm - 550 mm (optimal 260 mm)</i>	100-010753	1.746,00 €
RL12-10 UV365	<i>UV (365 nm), working distance 150 mm - 550 mm (optimal 260 mm)</i>	100-010755	2.588,00 €

Ring Lights Power Line



RL12-S40 Series <Segment/>



Number of LEDs	12 × Power LED
LED life span	50.000 h (L70, according to manufacturer)
Brightness control	continuous adjusting 0 - 100% (4 segments with different rotation modes)
Power consumption	approx. 15 W
Input power supply	100 - 240 V AC, 50/60 Hz
Output power supply	24 V DC, 1 A
Height	42 mm
Outer diameter	130 mm
Inner diameter	66 mm
Clamping diameter	max. 66 mm
Inner thread	M67 × 0,75
Length supply line	0,85 m
Length power cord	1,40 m
Material	anodized aluminium
Color	titanium and black
Weight	approx. 750 g
Dimensions control unit (l × w × h)	135 mm × 70 mm × 44 mm



Applications

Microscopy
Machine Vision

Accessories

Protective Glass [Page 63](#)
Polarisation Filter Set [Page 63](#)
Diffusor Disc [Page 63](#)
Reducing Rings [Page 63](#)

Versions

RL12-25f-S40 PW	<i>pure white (5.700 K), working distance 40 mm - 220 mm (optimal 100 mm)</i>	100-012012	803,00 €
RL12-25f-S40 NW	<i>natural white (4.000 K), working distance 40 mm - 220 mm (optimal 100 mm)</i>	100-012011	803,00 €
RL12-25f-S40 WW	<i>warm white (3.000 K), working distance 40 mm - 220 mm (optimal 100 mm)</i>	100-012010	803,00 €
RL12-25f-S40 R	<i>red (625 nm), working distance 40 mm - 220 mm (optimal 100 mm)</i>	100-012009	909,00 €
RL12-25f-S40 G	<i>green (528 nm), working distance 40 mm - 220 mm (optimal 100 mm)</i>	100-012008	909,00 €
RL12-25f-S40 B	<i>blue (470 nm), working distance 40 mm - 220 mm (optimal 100 mm)</i>	100-012007	909,00 €
RL12-25f-S40 A	<i>amber (590 nm), working distance 40 mm - 220 mm (optimal 100 mm)</i>	100-012006	909,00 €
RL12-25s-S40 PW	<i>pure white (5.700 K), working distance 45 mm - 260 mm (optimal 100 mm)</i>	100-012019	803,00 €
RL12-25s-S40 NW	<i>natural white (4.000 K), working distance 45 mm - 260 mm (optimal 100 mm)</i>	100-012018	803,00 €
RL12-25s-S40 WW	<i>warm white (3.000 K), working distance 45 mm - 260 mm (optimal 100 mm)</i>	100-012017	803,00 €
RL12-25s-S40 R	<i>red (625 nm), working distance 45 mm - 260 mm (optimal 100 mm)</i>	100-012016	909,00 €
RL12-25s-S40 G	<i>green (528 nm), working distance 45 mm - 260 mm (optimal 100 mm)</i>	100-012015	909,00 €
RL12-25s-S40 B	<i>blue (470 nm), working distance 45 mm - 260 mm (optimal 100 mm)</i>	100-012014	909,00 €
RL12-25s-S40 A	<i>amber (590 nm), working distance 45 mm - 260 mm (optimal 100 mm)</i>	100-012013	909,00 €
RL12-18f-S40 PW	<i>pure white (5.700 K), working distance 50 mm - 800 mm (optimal 140 mm)</i>	100-011998	803,00 €
RL12-18f-S40 NW	<i>natural white (4.000 K), working distance 50 mm - 800 mm (optimal 140 mm)</i>	100-011997	803,00 €
RL12-18f-S40 WW	<i>warm white (3.000 K), working distance 50 mm - 800 mm (optimal 140 mm)</i>	100-011996	803,00 €
RL12-18f-S40 R	<i>red (625 nm), working distance 50 mm - 800 mm (optimal 140 mm)</i>	100-011995	909,00 €
RL12-18f-S40 G	<i>green (528 nm), working distance 50 mm - 800 mm (optimal 140 mm)</i>	100-011994	909,00 €
RL12-18f-S40 B	<i>blue (470 nm), working distance 50 mm - 800 mm (optimal 140 mm)</i>	100-011993	909,00 €
RL12-18f-S40 A	<i>amber (590 nm), working distance 50 mm - 800 mm (optimal 140 mm)</i>	100-011992	909,00 €

Ring Lights Power Line



Versions			
RL12-18s-S40 PW	<i>pure white (5.700 K), working distance 90 mm - 180 mm (optimal 140 mm)</i>	100-012005	803,00 €
RL12-18s-S40 NW	<i>natural white (4.000 K), working distance 90 mm - 180 mm (optimal 140 mm)</i>	100-012004	803,00 €
RL12-18s-S40 WW	<i>warm white (3.000 K), working distance 90 mm - 180 mm (optimal 140 mm)</i>	100-012003	803,00 €
RL12-18s-S40 R	<i>red (625 nm), working distance 90 mm - 180 mm (optimal 140 mm)</i>	100-012002	909,00 €
RL12-18s-S40 G	<i>green (528 nm), working distance 90 mm - 180 mm (optimal 140 mm)</i>	100-012001	909,00 €
RL12-18s-S40 B	<i>blue (470 nm), working distance 90 mm - 180 mm (optimal 140 mm)</i>	100-012000	909,00 €
RL12-18s-S40 A	<i>amber (590 nm), working distance 90 mm - 180 mm (optimal 140 mm)</i>	100-011999	909,00 €
RL12-10s-S40 PW	<i>pure white (5.700 K), working distance 150 mm - 500 mm (optimal 270 mm)</i>	100-011991	803,00 €
RL12-10s-S40 NW	<i>natural white (4.000 K), working distance 150 mm - 500 mm (optimal 270 mm)</i>	100-011990	803,00 €
RL12-10s-S40 WW	<i>warm white (3.000 K), working distance 150 mm - 500 mm (optimal 270 mm)</i>	100-011989	803,00 €
RL12-10s-S40 R	<i>red (625 nm), working distance 150 mm - 500 mm (optimal 270 mm)</i>	100-011988	909,00 €
RL12-10s-S40 G	<i>green (528 nm), working distance 150 mm - 500 mm (optimal 270 mm)</i>	100-011987	909,00 €
RL12-10s-S40 B	<i>blue (470 nm), working distance 150 mm - 500 mm (optimal 270 mm)</i>	100-011986	909,00 €
RL12-10s-S40 A	<i>amber (590 nm), working distance 150 mm - 500 mm (optimal 270 mm)</i>	100-011985	909,00 €

Ring Lights Power Line



RL12-24V Series <24 volt direct connection/>



Number of LEDs	12 × Power LED
Brightness control	yes, by PWM trigger
Power consumption	approx. 15 W
Operating voltage	24 V DC
Protection class	III
Connection	M12 plug
Height	42 mm
Outer diameter	130 mm
Inner diameter	66 mm
Clamping diameter	max. 66 mm
Inner thread	M67 × 0,75
Material	anodized aluminium
Color	titanium and black
Weight	approx. 750 g



Applications

Machine Vision
Machine Lamps

Accessories

Protective Glass [Page 63](#)
Polarisation Filter Set [Page 63](#)
Diffusor Disc [Page 63](#)
Reducing Rings [Page 63](#)
Power Supply [Page 66](#)

Versions

RL12-25f-24V PW	<i>pure white (5.700 K), working distance 40 mm - 220 mm (optimal 100 mm)</i>	100-010780	749,00 €
RL12-25f-24V NW	<i>natural white (4.000 K), working distance 40 mm - 220 mm (optimal 100 mm)</i>	100-010781	749,00 €
RL12-25f-24V WW	<i>warm white (3.000 K), working distance 40 mm - 220 mm (optimal 100 mm)</i>	100-010782	749,00 €
RL12-25f-24V R	<i>red (625 nm), working distance 40 mm - 220 mm (optimal 100 mm)</i>	100-010783	831,00 €
RL12-25f-24V G	<i>green (528 nm), working distance 40 mm - 220 mm (optimal 100 mm)</i>	100-010524	831,00 €
RL12-25f-24V B	<i>blue (470 nm), working distance 40 mm - 220 mm (optimal 100 mm)</i>	100-010785	831,00 €
RL12-25f-24V A	<i>amber (590 nm), working distance 40 mm - 220 mm (optimal 100 mm)</i>	100-010786	831,00 €
RL12-25s-24V PW	<i>pure white (5.700 K), working distance 45 mm - 260 mm (optimal 100 mm)</i>	100-010770	749,00 €
RL12-25s-24V NW	<i>natural white (4.000 K), working distance 45 mm - 260 mm (optimal 100 mm)</i>	100-010771	749,00 €
RL12-25s-24V WW	<i>warm white (3.000 K), working distance 45 mm - 260 mm (optimal 100 mm)</i>	100-010772	749,00 €
RL12-25s-24V R	<i>red (625 nm), working distance 45 mm - 260 mm (optimal 100 mm)</i>	100-010773	831,00 €
RL12-25s-24V G	<i>green (528 nm), working distance 45 mm - 260 mm (optimal 100 mm)</i>	100-010774	831,00 €
RL12-25s-24V B	<i>blue (470 nm), working distance 45 mm - 260 mm (optimal 100 mm)</i>	100-010775	831,00 €
RL12-25s-24V A	<i>amber (590 nm), working distance 45 mm - 260 mm (optimal 100 mm)</i>	100-010776	831,00 €
RL12-25-24V UV405	<i>UV (405 nm), working distance 45 mm - 260 mm (optimal 100 mm)</i>	100-010777	1.707,00 €
RL12-25-24V UV365	<i>UV (365 nm), working distance 45 mm - 260 mm (optimal 100 mm)</i>	100-010779	2.529,00 €

Ring Lights Power Line



Versions			
RL12-18f-24V PW	<i>pure white (5.700 K), working distance 50 mm - 800 mm (optimal 140 mm)</i>	100-010797	749,00 €
RL12-18f-24V NW	<i>natural white (4.000 K), working distance 50 mm - 800 mm (optimal 140 mm)</i>	100-010798	749,00 €
RL12-18f-24V WW	<i>warm white (3.000 K), working distance 50 mm - 800 mm (optimal 140 mm)</i>	100-010799	749,00 €
RL12-18f-24V R	<i>red (625 nm), working distance 50 mm - 800 mm (optimal 140 mm)</i>	100-010800	831,00 €
RL12-18f-24V G	<i>green (528 nm), working distance 50 mm - 800 mm (optimal 140 mm)</i>	100-009851	831,00 €
RL12-18f-24V B	<i>blue (470 nm), working distance 50 mm - 800 mm (optimal 140 mm)</i>	100-010802	831,00 €
RL12-18f-24V A	<i>amber (590 nm), working distance 50 mm - 800 mm (optimal 140 mm)</i>	100-010803	831,00 €
RL12-18s-24V PW	<i>pure white (5.700 K), working distance 90 mm - 180 mm (optimal 140 mm)</i>	100-010787	749,00 €
RL12-18s-24V NW	<i>natural white (4.000 K), working distance 90 mm - 180 mm (optimal 140 mm)</i>	100-010788	749,00 €
RL12-18s-24V WW	<i>warm white (3.000 K), working distance 90 mm - 180 mm (optimal 140 mm)</i>	100-010789	749,00 €
RL12-18s-24V R	<i>red (625 nm), working distance 90 mm - 180 mm (optimal 140 mm)</i>	100-010790	831,00 €
RL12-18s-24V G	<i>green (528 nm), working distance 90 mm - 180 mm (optimal 140 mm)</i>	100-010791	831,00 €
RL12-18s-24V B	<i>blue (470 nm), working distance 90 mm - 180 mm (optimal 140 mm)</i>	100-010792	831,00 €
RL12-18s-24V A	<i>amber (590 nm), working distance 90 mm - 180 mm (optimal 140 mm)</i>	100-010793	831,00 €
RL12-18-24V UV405	<i>UV (405 nm), working distance 90 mm - 180 mm (optimal 140 mm)</i>	100-010794	1.707,00 €
RL12-18-24V UV365	<i>UV (365 nm), working distance 90 mm - 180 mm (optimal 140 mm)</i>	100-010796	2.529,00 €
RL12-10s-24V PW	<i>pure white (5.700 K), working distance 150 mm - 500 mm (optimal 270 mm)</i>	100-008880	749,00 €
RL12-10s-24V NW	<i>natural white (4.000 K), working distance 150 mm - 500 mm (optimal 270 mm)</i>	100-010805	749,00 €
RL12-10s-24V WW	<i>warm white (3.000 K), working distance 150 mm - 500 mm (optimal 270 mm)</i>	100-010806	749,00 €
RL12-10s-24V R	<i>red (625 nm), working distance 150 mm - 500 mm (optimal 270 mm)</i>	100-010807	831,00 €
RL12-10s-24V G	<i>green (528 nm), working distance 150 mm - 500 mm (optimal 270 mm)</i>	100-010239	831,00 €
RL12-10s-24V B	<i>blue (470 nm), working distance 150 mm - 500 mm (optimal 270 mm)</i>	100-010809	831,00 €
RL12-10s-24V A	<i>amber (590 nm), working distance 150 mm - 500 mm (optimal 270 mm)</i>	100-010810	831,00 €
RL12-10-24V UV405	<i>UV (405 nm), working distance 150 mm - 550 mm (optimal 260 mm)</i>	100-010811	1.707,00 €
RL12-10-24V UV365	<i>UV (365 nm), working distance 150 mm - 550 mm (optimal 260 mm)</i>	100-010813	2.529,00 €

Fiber Optical Lighting



LED3 Series <Cold Light Sources with Passive Cooling/>



LED life span	50.000 h (L70, according to manufacturer)
Light guide access	15 mm (Standard)
Power consumption	approx. 36 W
Input power supply	100 - 240 V AC, 50/60 Hz
Output power supply	15 V DC, 0 - 4 A
Dimensions (l × w × h)	259 mm × 174 mm × 81 mm
Material	anodized aluminium
Color	titanium and grey
Weight	approx. 3,7 kg



Applications

- Microscopy
- Machine Vision
- Inspection

Versions

LED3-P	<i>pure white (5.700 K), CRI 70 typ.</i>	100-010055	725,00 €
LED3-PC	<i>pure white (5.700 K), CRI 90 typ.</i>	100-010056	755,00 €
LED3-N	<i>natural white (4.000 K), CRI 80 typ.</i>	100-010057	755,00 €
LED3-W	<i>warm white (3.000 K), CRI 80 typ.</i>	100-010058	725,00 €

Fiber Optical Lighting



LED.70 <Cold Light Sources with Passive Cooling/>



Luminous flux (light guide 1 m × Ø 9 mm)	approx. 1.500 lm
Color temperature	6.900 K
Color rendering index (CRI)	≥ 75
LED life span	50.000 h (L70, according to manufacturer)
Light guide access	15 mm (Standard)
Risk group	2
Power consumption	approx. 100 W
Operating voltage	100 - 240 V AC, 50/60 Hz
Protection class	I
IP code	IP20
Dimensions (l × w × h)	283 mm × 230 mm × 116 mm
Material	anodized aluminium
Color	black and silver
Weight	approx. 5,2 kg



Applications

- Microscopy
- Machine Vision
- Inspection

Accessories

- Handle [Page 64](#)

Versions				
LED.70 [EU]	<i>EU connector</i>		100-011724	1.390,00 €
LED.70 [US]	<i>US connector</i>		100-011842	1.390,00 €
LED.70 [UK]	<i>UK connector</i>		100-011843	1.390,00 €
LED.70 [CH]	<i>CH connector</i>		100-011844	1.390,00 €

LED8 <Cold Light Sources with Active Cooling/>



LED life span	50.000 h (L70, according to manufacturer)
Light guide access	15 mm (Standard)
Risk group	2
Power consumption	approx. 110 W
Operating voltage	100 - 240 V AC, 50/60 Hz
Protection class	I
IP code	IP20
Dimensions (l × w × h)	273 mm × 200 mm × 116 mm
Material	anodized aluminium
Color	black and silver
Weight	approx. 2,3 kg



Applications

Microscopy
Machine Vision
Inspection

Versions

LED8-P [EU]	6.900 K, CRI 75 typ., up to 1.600 lm, EU connector	100-011832	1.155,00 €
LED8-P [US]	6.900 K, CRI 75 typ., up to 1.600 lm, US connector	100-011853	1.155,00 €
LED8-P [UK]	6.900 K, CRI 75 typ., up to 1.600 lm, UK connector	100-011854	1.155,00 €
LED8-P [CH]	6.900 K, CRI 75 typ., up to 1.600 lm, CH connector	100-011855	1.155,00 €
LED8-D [EU]	5.600 K, CRI 92 typ., up to 1.200 lm, EU connector	100-012558	1.175,00 €
LED8-D [US]	5.600 K, CRI 92 typ., up to 1.200 lm, US connector	100-012636	1.175,00 €
LED8-D [UK]	5.600 K, CRI 92 typ., up to 1.200 lm, UK connector	100-012637	1.175,00 €
LED8-D [CH]	5.600 K, CRI 92 typ., up to 1.200 lm, CH connector	100-012568	1.175,00 €

Fiber Optical Lighting



GLF Series <Flexible Light Guides/>

Light guide access	15 mm (Standard)
Beam angle	70°
Illumination	point-like
Ambient temperature	max. 80°C
Temperature input (light source)	max. 240°C
Material tube	steel spiral, PVC



Applications

Microscopy
Machine Vision
Inspection

Accessories

Focussing Optic [Page 64](#)

Versions				
GLF1-1000-4.5	1-armed, arm length 1000 mm, active diameter 4,5 mm	100-011335	157,00 €	
GLF1-1000-9.0	1-armed, arm length 1000 mm, active diameter 9 mm	100-011336	275,00 €	
GLF1-1000-11.0	1-armed, arm length 1000 mm, active diameter 11,0 mm	100-011435	490,00 €	
GLF1-1600-4.5	1-armed, arm length 1600 mm, active diameter 4,5 mm	100-003906	189,00 €	
GLF1-1600-9.0	1-armed, arm length 1600 mm, active diameter 9 mm	100-010571	412,00 €	
GLF1-1600-11.0	1-armed, arm length 1600 mm, active diameter 11 mm	100-010601	545,00 €	
GLF2-1000-4.5	2-armed, arm length 1000 mm, active diameter 4,5 mm	100-011337	275,00 €	
GLF2-1600-4.5	2-armed, arm length 1600 mm, active diameter 4,5 mm	100-003907	325,00 €	
GLF3-1000-4.5	3-armed, arm length 1000 mm, active diameter 4,5 mm	100-011338	390,00 €	
GLF3-1600-4.5	3-armed, arm length 1600 mm, active diameter 4,5 mm	100-003908	468,00 €	

Fiber Optical Lighting



GLS Series <Semi-rigid Light Guides/>



Light guide access	15 mm (Standard)
Beam angle	70°
Illumination	point-like
Temperature input (light source)	max. 230°C
Material tube	steel / brass, black painted



Applications
Microscopy
Machine Vision

Versions				
GLS1-450-4.5	1-armed, arm Length 450 mm, active diameter 4,5 mm	100-003622	137,00 €	
GLS1-600-4.5	1-armed, arm Length 600 mm, active diameter 4,5 mm	100-003873	149,00 €	
GLS1-800-4.5	1-armed, arm Length 800 mm, active diameter 4,5 mm	100-010592	179,00 €	
GLS2-400-3.2	2-armed, arm Length 400 mm, active diameter 3,2 mm	100-005914	219,00 €	
GLS2-450-4.5	2-armed, arm Length 450 mm, active diameter 4,5 mm	100-002929	226,00 €	
GLS2-600-4.5	2-armed, arm Length 600 mm, active diameter 4,5 mm	100-003875	239,00 €	
GLS2-800-4.5	2-armed, arm Length 800 mm, active diameter 4,5 mm	100-010596	335,00 €	
GLS2-600+800-4.5	2-armed, arm Length 600 mm + 800 mm, active diameter 4,5 mm	100-010597	349,00 €	
GLS3-450-4.5	3-armed, arm Length 450 mm, active diameter 4,5 mm	100-002913	356,00 €	
GLS3-600-4.5	3-armed, arm Length 600 mm, active diameter 4,5 mm	100-003876	396,00 €	
GLS3-800-4.5	3-armed, arm Length 800 mm, active diameter 4,5 mm	100-010598	445,00 €	

Fiber Optical Lighting



SLR Series <Fiber Optical Ring Lights/>

Light guide access	15 mm (Standard)
Length supply line	1,00 m
Ambient temperature	max. 80°C
Temperature input (light source)	max. 240°C
Material	anodized aluminium
Color	titanium
Material tube	steel spiral, PVC



Applications

Microscopy
Machine Vision

Accessories

Diffusor Disc [Page 63](#)
Reducing Rings (SRL6) [Page 63](#)

Versions

SRL3	<i>feed line 1 m, active diameter 6,4 mm</i>	100-010602	539,00 €
SRL6	<i>feed line 1 m, active diameter 9,0 mm</i>	100-008508	595,00 €

Laboratory and Work Place Lamps



IL11 Series <Incident Lamps/>



Illuminance	400 klx (distance 2 cm)
Illuminant	2 × High CRI LED
Color temperature	5.600 K (pure white)
Color rendering index (CRI)	≥ 95
Brightness control	sensitive adjusting 0 - 100% with memory function
Power consumption	approx. 10 W
Input power supply	100 - 240 V AC, 50/60 Hz
Output power supply	24 V DC, 1 A
Protection class	III
Number of arms	2
Diameter for fixing rod	12 mm
Length power cord	1,40 m
Material	anodized aluminium
Color	black
Weight	approx. 0,6 kg
Dimensions control unit (l × w × h)	80 mm × 40 mm × 37 mm



Applications

Microscopy
Work Place

Accessories

Mounting [Page 65](#)

Versions

IL11-450 2-arm PW	2-armed, arm length 450 mm, pure white (5.600 K)	100-012043	249,00 €
IL11-600 2-arm PW	2-armed, arm length 600 mm, pure white (5.600 K)	100-012094	269,00 €

Laboratory and Work Place Lamps



IL21 Series <Incident Lamps/>



Illuminance	400 klx (distance 2 cm)
Illuminant	2 × High CRI LED
Color temperature	5.600 K (pure white)
Color rendering index (CRI)	≥ 95
Brightness control	continuous adjusting 0 - 100 %
Power consumption	approx. 10 W
Input power supply	100 - 240 V AC, 50/60 Hz
Output power supply	24 V DC, 1 A
Protection class	III
Number of arms	2
Length power cord	1,40 m
Material	anodized aluminium
Color	black
Weight	approx. 0,6 kg



Applications

Microscopy
Machine Vision
Work Place

Versions

IL21-450 2-arm PW	2-armed, arm length 450 mm, pure white (5.600 K)	100-012159	249,00 €
IL21-600 2-arm PW	2-armed, arm length 600 mm, pure white (5.600 K)	100-012160	269,00 €

Laboratory and Work Place Lamps



PL Series <Work Place Lamps/>



LED Type	6 × 3 W Power LED
Brightness control	sensitive adjusting 0 - 100% with memory function
Power consumption	approx. 14 W
Input power supply	100 - 240 V AC, 50/60 Hz
Output power supply	24 V DC, 1 A
Protection class	III
IP code	IP50
Length of arms	400 mm + 400 mm + 80 mm
Dimension luminaire head	300 mm × 30 mm × 30 mm
Clamping range	20 mm - 70 mm
Material	anodized aluminium and plastic
Color	silver and black
Weight	approx. 1,0 kg



Applications
Work Place

Versions			
PL300-A PW	<i>pure white (5.700 K)</i>	100-008295	459,00 €
PL300-A NW	<i>natural white (4.000 K)</i>	100-008436	459,00 €
PL300-A WW	<i>warm white (3.000 K)</i>	100-008452	459,00 €

Laboratory and Work Place Lamps



LL6 Series <Magnifier Luminaires/>



Illuminant	6 × 3 W Power LED
Magnification	3 × (6 dioptries)
Power consumption	approx. 20 W
Input power supply	100 - 240 V AC, 50/60 Hz
Output power supply	24 V DC, 1 A
Length of arms	450 mm + 400 mm
Clamping range	max. 50 mm
Diameter (lens)	120 mm
Material	metal
Color	grey
Weight	approx. 2,65 kg



Applications

Laboratory
Work Place

Versions

LL6-PW	6 × pure white (5.700 K)	100-011177	554,00 €
LL6-NW	6 × natural white (4.000 K)	100-011026	554,00 €
LL6-PW-UV365	3 × pure white (5.700 K), 3 × UV (365 nm)	100-011290	741,00 €
LL6-PW-UV400	3 × pure white (5.700 K), 3 × UV (400 nm)	100-011291	714,00 €
LL6-NW-UV365	3 × natural white (4.000 K), 3 × UV (365 nm)	100-010886	741,00 €
LL6-NW-UV400	3 × natural white (4.000 K), 3 × UV (400 nm)	100-011024	714,00 €

Laboratory and Work Place Lamps



LS Series <Endoscope Light Sticks/>



Luminous flux	approx. 80 - 100 lm
Number of LEDs	1
Color temperature	4.000 K
LED life span	50.000 h (L70, according to manufacturer)
Power consumption	5 W
Operating voltage	5 V DC
Connection	mounting jack Ø 5,7/2,35 mm
Length	150 mm
Diameter	8 mm
Material	stainless steel
Color	natural
Weight	approx. 12 g



Applications
Inspection

Versions

LS1	<i>natural white (4.000 K)</i>	100-010494	81,00 €
LS1 Set	<i>natural white (4.000 K), with power supply and cable</i>	100-010984	99,00 €

IL1-Lab Series <Incident Lamps/>



Illuminant	LED Module 21 mm (exklusive)
LED Type	3 W Power LED
Brightness control	sensitive adjusting 0 - 100% with memory function
Input power supply	100 - 240 V AC, 50/60 Hz
Output power supply	24 V DC, 1 A
Protection class	III
Diameter for fixing rod	12 mm
Length power cord	approx. 1,40 m
Material	anodized aluminium
Color	black
Weight	approx. 0,5 kg
Dimensions control unit (l × w × h)	80 mm × 40 mm × 37 mm



Applications

Microscopy
Work Place

Accessories

LED Modules [Page 52](#)
Mounting [Page 65](#)

Versions				
IL1-Lab-450 1-arm	1-armed, arm length 450 mm	100-006567	217,00 €	
IL1-Lab-450 2-arm	2-armed, arm length 450 mm	100-006568	265,00 €	
IL1-Lab-450 2-arm ESD	2-armed, arm length 450 mm	100-012070	315,00 €	
IL1-Lab-600 1-arm	1-armed, arm length 600 mm	100-010737	238,00 €	
IL1-Lab-600 2-arm	2-armed, arm length 600 mm	100-007484	305,00 €	
IL1-Lab-600 2-arm ESD	2-armed, arm length 600 mm	100-012268	355,00 €	

IL1 Series <Incident Lamps/>



Illuminant	LED Module 21 mm (exklusive)
LED Type	3 W Power LED
Brightness control	sensitive adjusting 0 - 100% with memory function
Input power supply	100 - 240 V AC, 50/60 Hz
Output power supply	24 V DC, 1 A
Protection class	III
Diameter for fixing rod	12 mm
Length power cord	approx. 1,40 m
Protective glass	borosilicate glass
Material	anodized aluminium
Color	black
Weight	approx. 0,5 kg
Dimensions control unit (l × w × h)	80 mm × 40 mm × 37 mm



Applications

Microscopy
Work Place

Accessories

LED Modules [Page 52](#)
IR Protective Filter [Page 65](#)
Mounting [Page 65](#)

Versions

IL1-450 1-arm	<i>with protective glass, 1-armed, arm length 450 mm</i>	100-006570	288,00 €
IL1-450 2-arm	<i>with protective glass, 2-armed, arm length 450 mm</i>	100-006571	407,00 €
IL1-600 1-arm	<i>with protective glass, 1-armed, arm length 600 mm</i>	100-010741	304,00 €
IL1-600 2-arm	<i>with protective glass, 2-armed, arm length 600 mm</i>	100-007932	438,00 €

IL12-Lab Series <Incident Lamps/>



Illuminant	2 × LED Module 21 mm (exklusive)
LED Type	3 W Power LED
Brightness control	continuous adjusting 0 - 100 %
Input power supply	100 - 240 V AC, 50/60 Hz
Output power supply	24 V DC, 1 A
Protection class	III
Number of arms	2
Length power cord	approx. 1,40 m
Material	anodized aluminium
Color	black
Weight	approx. 0,7 kg
Farbe	schwarz



Applications

Microscopy
Work Place

Accessories

LED Modules [Page 52](#)

Versions

IL12-Lab-450 2-arm	2-armed, arm length 450 mm	100-006569	245,00 €
IL12-Lab-600 2-arm	2-armed, arm length 600 mm	100-010740	285,00 €

IL12 Series <Incident Lamps/>



Illuminant	2 × LED Module 21 mm (exklusive)
LED Type	3 W Power LED
Brightness control	continuous adjusting 0 - 100 %
Input power supply	100 - 240 V AC, 50/60 Hz
Output power supply	24 V DC, 1 A
Protection class	III
Number of arms	2
Length power cord	approx. 1,40 m
Protective glass	borosilicate glass
Material	anodized aluminium
Color	black
Weight	approx. 0,8 kg



Applications

Microscopy
Work Place

Accessories

LED Modules [Page 52](#)
IR Protective Filter [Page 65](#)

Versions

IL12-450 2-arm	<i>with protective glass, 2-armed, arm length 450 mm</i>	100-010764	397,00 €
IL12-600 2-arm	<i>with protective glass, 2-armed, arm length 600 mm</i>	100-010765	418,00 €

IL13 Series <Incident Lamps/>



Illuminant	3 × LED Module 21 mm (exklusive)
LED Type	3 W Power LED
Brightness control	sensitive adjusting 0 - 100% with memory function
Input power supply	100 - 240 V AC, 50/60 Hz
Output power supply	24 V DC, 1 A
Protection class	III
Diameter for fixing rod	12 mm
Length power cord	approx. 1,40 m
Protective glass	borosilicate glass
Material	anodized aluminium
Color	black
Weight	approx. 1,0 kg
Dimensions control unit (l × w × h)	80 mm × 40 mm × 37 mm



Applications

Microscopy
Work Place

Accessories

LED Modules [Page 52](#)
Mounting [Page 65](#)

Versions

IL13-450 1-arm	<i>with protective glass, 1-armed, arm length 450 mm</i>	100-010766	510,00 €
IL13-450 2-arm	<i>with protective glass, 2-armed, arm length 450 mm</i>	100-010768	762,00 €
IL13-600 1-arm	<i>with protective glass, 1-armed, arm length 600 mm</i>	100-010767	520,00 €
IL13-600 2-arm	<i>with protective glass, 2-armed, arm length 600 mm</i>	100-010769	783,00 €

IL100 <Machine Lamps/>



Illuminant	LED Module 21 mm (exklusive)
LED Type	3 W Power LED
Brightness control	sensitive adjusting 0 - 100% with memory function
Input power supply	100 - 240 V AC, 50/60 Hz
Output power supply	24 V DC, 1 A
Protection class	III
Length	96,9 mm
Diameter	25 mm
Length supply line	3,00 m
Length power cord	1,40 m
Protective glass	borosilicate glass
Material	anodized aluminium
Color	titanium
Weight	approx. 75 g
Dimensions control unit (l × w × h)	78 mm × 38 mm × 21 mm



Applications

Machine Lamps
Machine Vision

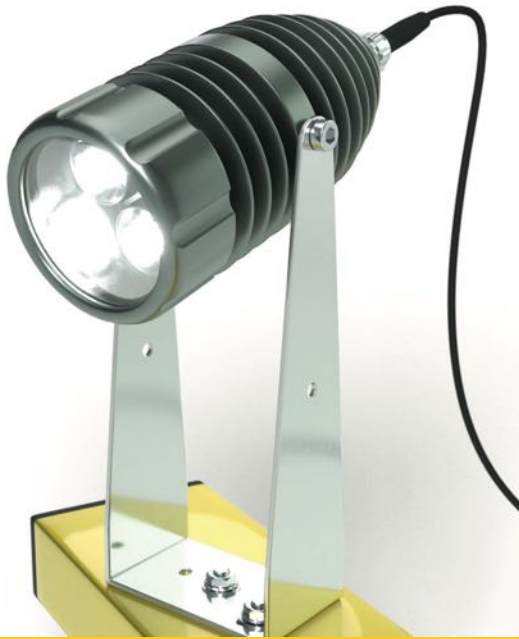
Accessories

LED Modules [Page 52](#)
IR Protective Filter [Page 65](#)
Mounting [Page 65](#)

Versions

IL100	<i>with brightness control</i>	100-008024	205,00 €
-------	--------------------------------	------------	----------

IL1300 <Machine Lamps/>



Illuminant	3 × LED Module 21 mm (exklusive)
LED Type	3 W Power LED
Brightness control	sensitive adjusting 0 - 100% with memory function
Input power supply	100 - 240 V AC, 50/60 Hz
Output power supply	24 V DC, 1 A
Protection class	III
Length	138 mm
Diameter	60 mm
Length supply line	3,00 m
Length power cord	1,40 m
Protective glass	borosilicate glass
Material	anodized aluminium
Color	titanium
Weight	approx. 0,44 kg
Dimensions control unit (l × w × h)	78 mm × 38 mm × 21 mm



Applications

Machine Lamps
Machine Vision

Accessories

LED Modules [Page 52](#)
Mounting [Page 65](#)

Versions

IL1300	<i>with brightness control</i>	100-008028	276,00 €
--------	--------------------------------	------------	----------

IL100-24V <Machine Lamps/>



Illuminant	LED Module 21 mm (exklusive)
LED Type	3 W Power LED
Brightness control	yes, by PWM trigger
Operating voltage	24 V DC
Protection class	III
IP code	IP67
Connection	M12 plug
Length	96,9 mm
Diameter	25 mm
Protective glass	borosilicate glass
Material	anodized aluminium
Color	titanium
Weight	approx. 100 g



Applications

Machine Lamps
Machine Vision

Accessories

LED Modules	Page 52
IR Protective Filter	Page 65
Mounting	Page 65
Power Supply	Page 66

Versions

IL100-24V	with M12 connector (4-pole), connection 90 degree	100-009861	140,00 €
IL100-24V-Z	with M12 connector (4-pole), connection straight line	100-012630	140,00 €

IL1300-24V <Machine Lamps/>



Illuminant	3 × LED Module 21 mm (exklusive)
LED Type	3 W Power LED
Brightness control	yes, by PWM trigger
Operating voltage	24 V DC
Protection class	III
IP code	IP67
Connection	M12 plug
Length	138 mm
Diameter	60 mm
Protective glass	borosilicate glass
Material	anodized aluminium
Color	titanium
Weight	approx. 0,44 kg



Applications

Machine Lamps
Machine Vision

Accessories

LED Modules [Page 52](#)
Mounting [Page 65](#)
Power Supply [Page 66](#)

Versions

IL1300-24V	with M12 connector (4-pole)	100-010744	218,00 €
------------	-----------------------------	------------	----------

IL100-F <Machine Lamps/>



Illuminant	LED Module 21 mm (exklusive)
LED Type	3 W Power LED
Operating voltage	24 V DC
Protection class	III
IP code	IP65
Connection	M12 plug
Length of arms	450 mm
Dimension luminaire head (l x Ø)	96,9 mm x 25 mm
Diameter stand	89 mm
Protective glass	borosilicate glass
Material	anodized aluminium
Color	titanium
Material flex arm	steel / brass with black plastic coating
Weight	ca. 0,86 kg



Applications

Machine Lamps
Machine Vision

Accessories

LED Modules [Page 52](#)
IR Protective Filter [Page 65](#)
Mounting [Page 65](#)
Power Supply [Page 66](#)

Versions

IL100-F	<i>flex arm, arm length 450 mm</i>	100-011494	220,00 €
---------	------------------------------------	------------	----------

IL1300-F <Machine Lamps/>



Illuminant	3 × LED Module 21 mm (exklusive)
LED Type	3 W Power LED
Operating voltage	24 V DC
Protection class	III
IP code	IP65
Connection	M12 plug
Length of arms	450 mm
Dimension luminaire head (l × Ø)	138 mm × 60 mm
Diameter stand	89 mm
Protective glass	borosilicate glass
Material	anodized aluminium
Color	titanium
Material flex arm	steel / brass with black plastic coating
Weight	ca. 1,22 kg



Applications

Machine Lamps
Machine Vision

Accessories

LED Modules [Page 52](#)
Mounting [Page 65](#)
Power Supply [Page 66](#)

Versions

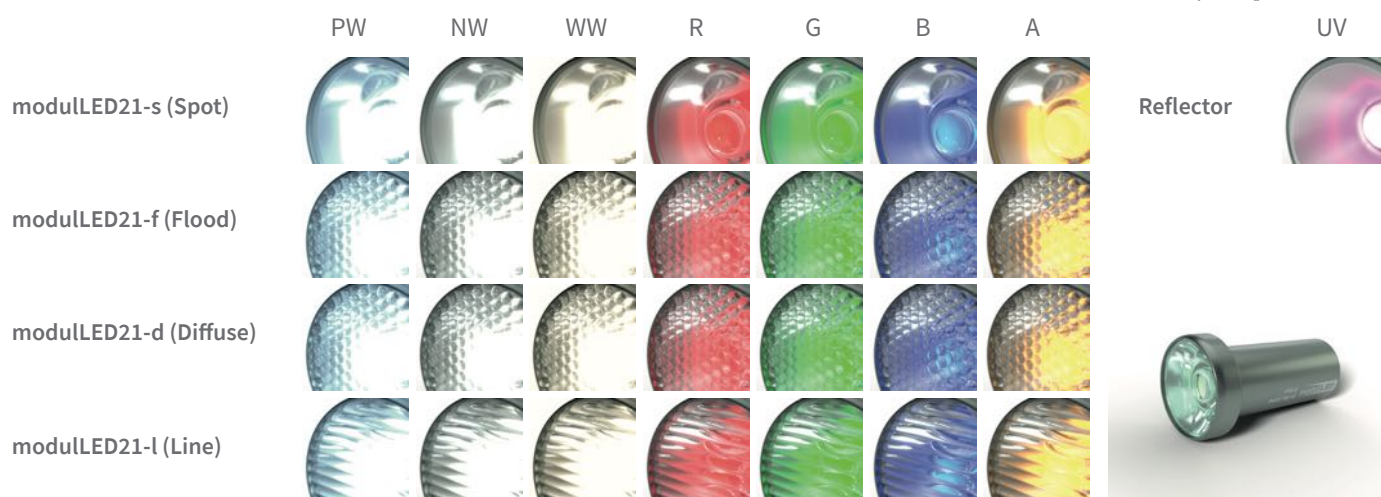
IL1300-F	<i>flex arm, arm length 450 mm</i>	100-011707	294,00 €
----------	------------------------------------	------------	----------

Laboratory and Machine Lamps modulLED®



modulLED®21 <LED Modules 21 mm/>

modulLED®
by StarLight



Versions			
modulLED21-s PW	<i>pure white (5.700 K), Spot (10°)</i>	100-006420	51,00 €
modulLED21-s NW	<i>natural white (4.000 K), Spot (10°)</i>	100-006443	51,00 €
modulLED21-s WW	<i>warm white (3.000 K), Spot (10°)</i>	100-006447	51,00 €
modulLED21-s R	<i>red (625 nm), Spot (10°)</i>	100-005387	51,00 €
modulLED21-s G	<i>green (528 nm), Spot (10°)</i>	100-005933	51,00 €
modulLED21-s B	<i>blue (470 nm), Spot (10°)</i>	100-005934	51,00 €
modulLED21-s A	<i>amber (590 nm), Spot (10°)</i>	100-004449	51,00 €
modulLED21-f PW	<i>pure white (5.700 K), Flood (28°)</i>	100-006421	51,00 €
modulLED21-f NW	<i>natural white (4.000 K), Flood (28°)</i>	100-006444	51,00 €
modulLED21-f WW	<i>warm white (3.000 K), Flood (28°)</i>	100-006448	51,00 €
modulLED21-f R	<i>red (625 nm), Flood (28°)</i>	100-005388	51,00 €
modulLED21-f G	<i>green (528 nm), Flood (28°)</i>	100-005389	51,00 €
modulLED21-f B	<i>blue (470 nm), Flood (28°)</i>	100-005390	51,00 €
modulLED21-f A	<i>amber (590 nm), Flood (28°)</i>	100-010722	51,00 €
modulLED21-d PW	<i>pure white (5.700 K), Diffuse (40°)</i>	100-006422	51,00 €
modulLED21-d NW	<i>natural white (4.000 K), Diffuse (40°)</i>	100-006445	51,00 €
modulLED21-d WW	<i>warm white (3.000 K), Diffuse (40°)</i>	100-006449	51,00 €
modulLED21-d R	<i>red (625 nm), Diffuse (40°)</i>	100-005936	51,00 €
modulLED21-d G	<i>green (528 nm), Diffuse (40°)</i>	100-005935	51,00 €
modulLED21-d B	<i>blue (470 nm), Diffuse (40°)</i>	100-005937	51,00 €
modulLED21-d A	<i>amber (590 nm), Diffuse (40°)</i>	100-010723	51,00 €
modulLED21-l PW	<i>pure white (5.700 K), Line (12° × 30°)</i>	100-006423	51,00 €
modulLED21-l NW	<i>natural white (4.000 K), Line (12° × 30°)</i>	100-006446	51,00 €
modulLED21-l WW	<i>warm white (3.000 K), Line (12° × 30°)</i>	100-006450	51,00 €
modulLED21-l R	<i>red (625 nm), Line (12° × 30°)</i>	100-005939	51,00 €
modulLED21-l G	<i>green (528 nm), Line (12° × 30°)</i>	100-005938	51,00 €
modulLED21-l B	<i>blue (470 nm), Line (12° × 30°)</i>	100-005940	51,00 €
modulLED21-l A	<i>amber (590 nm), Line (12° × 30°)</i>	100-010724	51,00 €
modulLED21 UV365	<i>UV (365 nm), Reflector (80°)</i>	100-010758	231,00 €
modulLED21 UV405	<i>UV (405 nm), Reflector (80°)</i>	100-010756	154,00 €

IL3 Series <Incident Lamps/>



Illuminant	LED Module 28 mm (exklusive)
LED Type	3 W Power LED
Brightness control	sensitive adjusting 0 - 100% with memory function
Input power supply	100 - 240 V AC, 50/60 Hz
Output power supply	24 V DC, 1 A
Protection class	III
Diameter for fixing rod	12 mm
Length power cord	approx. 1,40 m
Protective glass	borosilicate glass
Material	anodized aluminium
Color	black
Weight	approx. 0,7 kg
Dimensions control unit (l × w × h)	80 mm × 40 mm × 37 mm



Applications

Microscopy
Work Place

Accessories

LED Modules [Page 56](#)
IR Protective Filter [Page 65](#)
Mounting [Page 65](#)

Versions

IL3-450 1-arm	<i>with protective glass, 1-armed, arm length 450 mm</i>	100-010742	423,00 €
IL3-450 2-arm	<i>with protective glass, 2-armed, arm length 450 mm</i>	100-010743	517,00 €
IL3-600 1-arm	<i>with protective glass, 1-armed, arm length 600 mm</i>	100-006572	433,00 €
IL3-600 2-arm	<i>with protective glass, 2-armed, arm length 600 mm</i>	100-006573	538,00 €

IL300 <Machine Lamps/>



Illuminant	LED Module 28 mm (exklusive)
LED Type	3 W Power LED
Brightness control	sensitive adjusting 0 - 100% with memory function
Input power supply	100 - 240 V AC, 50/60 Hz
Output power supply	24 V DC, 1 A
Protection class	III
IP code	IP52
Length	105 mm
Diameter	35 mm
Length supply line	3,00 m
Length power cord	1,40 m
Protective glass	borosilicate glass
Material	anodized aluminium
Color	titanium
Weight	approx. 125 g
Dimensions control unit (l × w × h)	78 mm × 38 mm × 21 mm



Applications

Machine Lamps
Machine Vision

Accessories

LED Modules [Page 56](#)
IR Protective Filter [Page 65](#)
Mounting [Page 65](#)

Versions

IL300	<i>with brightness control</i>	100-008026	230,00 €
-------	--------------------------------	------------	----------

IL300-24V <Machine Lamps/>



Illuminant	LED Module 28 mm (exklusive)
LED Type	3 W Power LED
Brightness control	yes, by PWM trigger
Operating voltage	24 V DC
Protection class	III
IP code	IP67
Connection	M12 plug
Length	93,4 mm
Diameter	35 mm
Protective glass	borosilicate glass
Material	anodized aluminium
Color	titanium
Weight	approx. 150 g



Applications

Machine Lamps
Machine Vision

Accessories

LED Modules	Page 56
IR Protective Filter	Page 65
Mounting	Page 65
Power Supply	Page 66

Versions

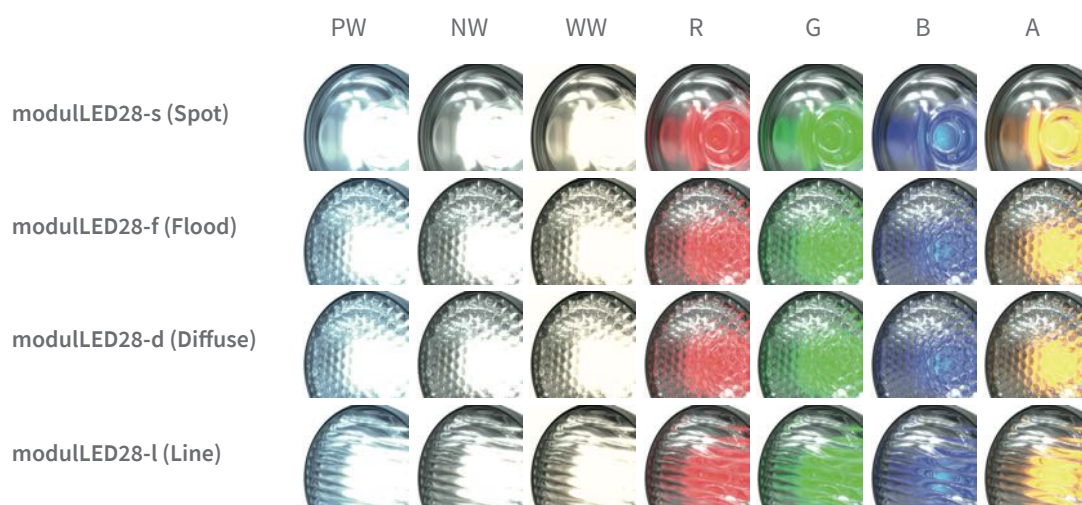
IL300-24V	with M12 connector (4-pole), connection 90 degree	100-009363	155,00 €
IL300-24V-Z	with M12 connector (4-pole), connection straight line	100-012629	155,00 €

Laboratory and Machine Lamps modulLED®



modulLED®28 <LED Modules 28 mm/>

modulLED®
by StarLight



Versions			
modulLED28-s PW	<i>pure white (5.700 K), Spot (6°)</i>	100-006463	55,00 €
modulLED28-s NW	<i>natural white (4.000 K), Spot (6°)</i>	100-006467	55,00 €
modulLED28-s WW	<i>warm white (3.000 K), Spot (6°)</i>	100-006471	55,00 €
modulLED28-s R	<i>red (625 nm), Spot (6°)</i>	100-005942	55,00 €
modulLED28-s G	<i>green (528 nm), Spot (6°)</i>	100-005943	55,00 €
modulLED28-s B	<i>blue (470 nm), Spot (6°)</i>	100-005944	55,00 €
modulLED28-s A	<i>amber (590 nm), Spot (6°)</i>	100-010725	55,00 €
modulLED28-f PW	<i>pure white (5.700 K), Flood (25°)</i>	100-006464	55,00 €
modulLED28-f NW	<i>natural white (4.000 K), Flood (25°)</i>	100-006468	55,00 €
modulLED28-f WW	<i>warm white (3.000 K), Flood (25°)</i>	100-006472	55,00 €
modulLED28-f R	<i>red (625 nm), Flood (25°)</i>	100-005638	55,00 €
modulLED28-f G	<i>green (528 nm), Flood (25°)</i>	100-005641	55,00 €
modulLED28-f B	<i>blue (470 nm), Flood (25°)</i>	100-005642	55,00 €
modulLED28-f A	<i>amber (590 nm), Flood (25°)</i>	100-010726	55,00 €
modulLED28-d PW	<i>pure white (5.700 K), Diffuse (40°)</i>	100-006465	55,00 €
modulLED28-d NW	<i>natural white (4.000 K), Diffuse (40°)</i>	100-006469	55,00 €
modulLED28-d WW	<i>warm white (3.000 K), Diffuse (40°)</i>	100-006473	55,00 €
modulLED28-d R	<i>red (625 nm), Diffuse (40°)</i>	100-005945	55,00 €
modulLED28-d G	<i>green (528 nm), Diffuse (40°)</i>	100-005946	55,00 €
modulLED28-d B	<i>blue (470 nm), Diffuse (40°)</i>	100-005947	55,00 €
modulLED28-d A	<i>amber (590 nm), Diffuse (40°)</i>	100-010727	55,00 €
modulLED28-l PW	<i>pure white (5.700 K), Line (8° × 30°)</i>	100-006466	55,00 €
modulLED28-l NW	<i>natural white (4.000 K), Line (8° × 30°)</i>	100-006470	55,00 €
modulLED28-l WW	<i>warm white (3.000 K), Line (8° × 30°)</i>	100-006474	55,00 €
modulLED28-l R	<i>red (625 nm), Line (8° × 30°)</i>	100-005948	55,00 €
modulLED28-l G	<i>green (528 nm), Line (8° × 30°)</i>	100-005949	55,00 €
modulLED28-l B	<i>blue (470 nm), Line (8° × 30°)</i>	100-005950	55,00 €
modulLED28-l A	<i>amber (590 nm), Line (8° × 30°)</i>	100-010728	55,00 €

Laboratory and Machine Lamps modulLED®

Microscope Lighting



MLH2 Series <Lamp Houses/>



Illuminant	30 W Power LED
LED life span	50.000 h (L70, according to manufacturer)
Brightness control	continuous adjusting 0 - 100 %
Power consumption	approx. 36 W
Input power supply	100 - 240 V AC, 50/60 Hz
Output power supply	24 V DC, 1 A
Dimensions (l × w × h)	100 mm × 84 mm × 100 mm
Cooling system	passive cooling system without fan
Material	anodized aluminium
Color	black
Weight	approx. 1,5 kg



Applications

Microscopy

Accessories

Adapter [Page 66](#)

Versions				
MLH2-PW	<i>pure white (5.700 K), CRI 70</i>		100-011163	822,00 €
MLH2-PC	<i>pure white (5.700 K), CRI 90</i>		100-011174	874,00 €
MLH2-NW	<i>natural white (4.000 K), CRI 80</i>		100-010945	822,00 €
MLH2-WW	<i>warm white (3.000 K), CRI 80</i>		100-011176	822,00 €
MLH2-UV365	<i>UV (365 nm)</i>		100-011614	1.007,00 €

Microscope Lighting



DL4 <Transmitted Lights/>



Luminous flux	approx. 200 lm
Color temperature	5.700 K
Color rendering index (CRI)	≥ 80
LED life span	50.000 h (L70, according to manufacturer)
Diameter illuminated surface	approx. 70 mm
Brightness control	sensitive adjusting 0 - 100% with memory function
Power consumption	approx. 4,5 W
Input power supply	100 - 240 V AC, 50/60 Hz
Output power supply	24 V DC, 1 A
Height	19 mm
Diameter	84 mm
Material	anodized aluminium
Color	titanium
Weight	approx. 0,38 kg
Dimensions control unit (l × w × h)	78 mm × 38 mm × 21 mm



Applications
Microscopy

Versions

DL4	<i>pure white (5.700 K), 200 lm, diameter 84 mm</i>	100-009593	379,00 €
-----	-----------------------------------------------------	------------	----------

Microscope Lighting



MSL1 <Microscope Stands/>



Light values	depending on LED modules
Number of luminaire heads	2 × LED Module 21 mm (exklusive)
Brightness control	sensitive adjusting 0 - 100% with memory function
Max. power consumption	approx. 7,5 W
Input power supply	100 - 240 V AC, 50/60 Hz
Output power supply	24 V DC, 1 A
Diameter stand column	32 mm h9
Height stand column	370 mm
Length gooseneck	450 mm
Dimensions base plate (l × w × h)	300 mm × 230 mm × 35 mm
Distance column → working area	150 mm - 161 mm
Material base plate	anodized aluminium
Material stand column	stainless steel
Color base plate	black
Total weight	approx. 7 kg



Applications
Microscopy

Accessories

LED Modules [Page 52](#)

Versions

MSL1	<i>with incident light (without LED modules)</i>	100-009632	916,00 €
------	--------------------------------------------------	------------	----------

Microscope Lighting



MSL2 <Microscope Stands/>



Light values	depending on LED modules
Number of luminaire heads	2 × LED Module 21 mm (exklusive)
Luminous flux transmitted light	approx. 200 lm
Color temperature transmitted light	5.700 K
Color rendering index (CRI) transmitted light	≥ 80
Diameter illuminated surface	approx. 70 mm
Brightness control	sensitive adjusting 0 - 100% with memory function
Max. power consumption	approx. 12 W
Input power supply	100 - 240 V AC, 50/60 Hz
Output power supply	24 V DC, 1 A
Diameter stand column	32 mm h9
Height stand column	370 mm
Length gooseneck	450 mm
Dimensions base plate (l × w × h)	300 mm × 230 mm × 35 mm
Distance column → working area	150 mm - 161 mm
Material base plate	anodized aluminium
Material stand column	stainless steel
Color base plate	black
Total weight	approx. 7 kg



Applications
Microscopy

Accessories
LED Modules

Page 52

Versions

MSL2	<i>with transmitted and incident light</i>	100-009892	1.045,00 €
------	--------------------------------------------	------------	------------

Microscope Lighting



MSL3 Series <Microscope Stands/>



Applications

Microscopy

Accessories

Protective Glass [Page 63](#)
 Polarisation Filter Set [Page 63](#)
 Diffuser Disc [Page 63](#)
 Reducing Rings [from Page 63](#)

Working distance	50 mm - 150 mm
Nominal working distance	approx. 80 mm
Number of LEDs ring light	48
Luminous flux transmitted light	approx. 200 lm
Color temperature transmitted light	5.700 K
Color rendering index (CRI) transmitted light	≥ 80
Diameter illuminated surface	approx. 70 mm
Brightness control	sensitive adjusting 0 - 100% with memory function
Max. power consumption	approx. 12 W
Input power supply	100 - 240 V AC, 50/60 Hz
Output power supply	24 V DC, 1 A
Height ring light	25,5 mm
Outer diameter ring light	99 mm
Inner diameter ring light	66 mm
Inner thread ring light	M67 × 0,75
Diameter stand column	32 mm h9
Height stand column	370 mm
Dimensions base plate (l × w × h)	300 mm × 230 mm × 35 mm
Distance column → working area	150 mm - 161 mm
Material	anodized aluminium
Material stand column	stainless steel
Color	black
Total weight	approx. 7 kg

Versions

MSL3-66 PW	with transmitted and ring light, clamping diameter max. 66 mm	100-011603	1.045,00 €
MSL3-66 NW	with transmitted and ring light, clamping diameter max. 66 mm	100-011758	1.045,00 €
MSL3-66 WW	with transmitted and ring light, clamping diameter max. 66 mm	100-011759	1.045,00 €
MSL3-74 PW	with transmitted and ring light, clamping diameter max. 74 mm	100-012021	1.045,00 €
MSL3-74 NW	with transmitted and ring light, clamping diameter max. 74 mm	100-012022	1.045,00 €
MSL3-74 WW	with transmitted and ring light, clamping diameter max. 74 mm	100-012023	1.045,00 €

Microscope Lighting



MSL4 <Microscope Stands/>



Applications
Microscopy

Illuminance	400 klx (distance 2 cm)
Illuminant	2 × High CRI LED
Color temperature	5.600 K (pure white)
Color rendering index (CRI)	≥ 95
Luminous flux transmitted light	approx. 200 lm
Color temperature transmitted light	5.700 K
Color rendering index (CRI) transmitted light	≥ 80
Diameter illuminated surface	approx. 70 mm
Brightness control	sensitive adjusting 0 - 100% with memory function
Max. power consumption	approx. 12 W
Input power supply	100 - 240 V AC, 50/60 Hz
Output power supply	24 V DC, 1 A
Diameter stand column	32 mm h9
Height stand column	370 mm
Length gooseneck	450 mm
Dimensions base plate (l × w × h)	300 mm × 230 mm × 35 mm
Distance column → working area	150 mm - 161 mm
Material base plate	anodized aluminium
Material stand column	stainless steel
Color base plate	black
Total weight	approx. 7 kg

Versions

MSL4	with transmitted and incident light, pur white (5.600 K)	100-012269	1.018,00 €
------	----------------------------------------------------------	------------	------------

for Ring Lights

Protective Glasses			
Protective Glass	for RL4/RL66 Series	100-010277	66,00 €
Protective Glass	for RL5/RL81 Series	100-010279	77,00 €
Protective Glass	for RL12 Series	100-007725	128,00 €
Polarisation Filter Sets			
Polarisation Filter Set	for RL66 Series	100-013240	439,00 €
Polarisation Filter Set	for RL4 Series	100-010280	230,00 €
Polarisation Filter Set	for RL5 Series	100-010281	242,00 €
Polarisation Filter Set	for RL12 Series	100-007726	271,00 €
Diffuser Discs			
Diffuser Disc	for RL1-10 Series	100-012024	44,00 €
Diffuser Disc	for RL1-40 Series	100-012025	44,00 €
Diffuser Disc	for RL40-35 Series	100-012329	44,00 €
Diffuser Disc	for RL40-120 Series	100-012331	44,00 €
Diffuser disc	for RL2-25 Series	100-010995	44,00 €
Diffuser disc	for RL2-50 Series	100-010994	44,00 €
Diffuser Disc IM	for RL4/RL66 Series	100-011486	62,00 €
Diffuser Disc	for RL81 Series	100-012339	77,00 €
Diffuser Disc	for RL5 Series	100-010278	77,00 €
Diffuser Disc	for RL12 Series	100-007724	128,00 €
Reducing Rings for RL1 Series			
Reducing ring	26 mm → 12 mm	100-009242	31,00 €
Reducing ring	26 mm → 14 mm	100-010710	31,00 €
Reducing ring	26 mm → 16 mm	100-010709	31,00 €
Reducing ring	26 mm → 18 mm	100-010708	31,00 €
Reducing ring	26 mm → 20 mm	100-009241	31,00 €
Reducing ring	26 mm → 22 mm	100-010707	31,00 €
Reducing ring	26 mm → 24 mm	100-010706	31,00 €
Reducing Rings for RL2 and RL40 Series			
Reducing ring	40 mm → 28 mm	100-010713	31,00 €
Reducing ring	40 mm → 30 mm	100-009229	31,00 €
Reducing ring	40 mm → 32 mm	100-009230	31,00 €
Reducing ring	40 mm → 34 mm	100-009238	31,00 €
Reducing ring	40 mm → 36 mm	100-010712	31,00 €
Reducing ring	40 mm → 38 mm	100-010711	31,00 €
Reducing Rings for RL4-66, RL66 and RL12 Series			
Reducing ring	66 mm → 50 mm	100-005115	31,00 €
Reducing ring	66 mm → 52 mm	100-005116	31,00 €
Reducing ring	66 mm → 54 mm	100-003976	31,00 €
Reducing ring	66 mm → 56 mm	100-003977	31,00 €
Reducing ring	66 mm → 58 mm	100-003978	31,00 €
Reducing ring	66 mm → 60 mm	100-003979	31,00 €
Reducing ring	66 mm → 62 mm	100-003980	31,00 €
Reducing ring	66 mm → 64 mm	100-003981	31,00 €

for Ring Lights

Reducing Rings for RL4-74 Series			
Reducing ring	74 mm → 68 mm	100-010716	31,00 €
Reducing ring	74 mm → 70 mm	100-010715	31,00 €
Reducing ring	74 mm → 72 mm	100-010714	31,00 €
Reducing Rings for RL5-81 and RL81 Series			
Reducing ring	81 mm → 76 mm	100-010718	31,00 €
Reducing ring	81 mm → 78 mm	100-010717	31,00 €
Reducing Rings for RL5-88 Series			
Reducing ring	88 mm → 82 mm	100-010721	31,00 €
Reducing ring	88 mm → 84 mm	100-010720	31,00 €
Reducing ring	88 mm → 86 mm	100-010719	31,00 €

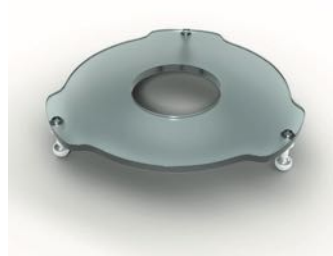
Protective Glass



Polarisation Filter Set



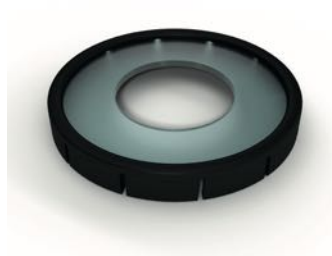
Diffusor Disc RL1, RL2, RL40



Diffusor Disc IM RL4, RL66



Diffusor Disc RL5, RL81, RL12



Reducing Rings



for Fiber Optical Lighting

Accessories for Light Guides			
Adaptor	for Schott Light Guide 10 + 12 mm	100-006343	43,00 €
Focusing optic	for active diameters 4,5 mm, f 30 mm	100-002917	46,00 €
Focusing optic	for active diameters 9 mm, f 18 mm	100-012573	83,00 €
Focusing optic	for active diameters 11 mm, f 18 mm	100-012217	287,00 €
Accessories für Cold Light Sources			
Handle	for LED.70	100-011513	61,00 €

Adapter for Schott



Focussing Optic 9 mm



Focussing Optic 11 mm



Handle for LED.70



Accessories



for Incident and Machine Lamps

Protective Filters			
IR Protective Filter	for IL100 (1064 nm)	100-004912	47,00 €
IR Protective Filter	for IL300 (1064 nm)	100-004422	55,00 €
Protective Glass Sets			
Protective Glass Set	for IL1, IL12 and IL100 (incl. O-Rings)	100-004585	10,00 €
Protective Glass Set	for IL3 and IL300 (incl. O-Rings)	100-004146	12,00 €
Protective Glass Set	for IL1300 (incl. O-Rings)	100-006335	19,00 €
Mounting			
X-Base	with fixing rod, 100 mm	100-011893	106,00 €
Stand Plate	with fixing rod, 100 mm	100-011341	107,00 €
Stand Plate	with fixing rod, 200 mm	100-004760	109,00 €
Stand Plate	with fixing rod, 400 mm	100-004761	116,00 €
Mounting bracket	for IL300, IL100-24V and IL300-24V	100-012397	20,00 €
L-Bracket		100-006332	18,00 €
U-Bracket		100-006333	26,00 €
Ball Joint		100-006334	66,00 €
Magnet	diameter 31 mm, 75 N	100-006336	20,00 €
Magnet	diameter 66 mm, 180 N	100-005086	29,00 €
Magnet	diameter 88 mm, 550 N	100-011738	68,00 €
Magnet	with fixing rod, 100 mm, 180 N	100-007341	55,00 €
Magnet	with fixing rod 200 mm, 180 N	100-005102	57,00 €
Fixing Rod	100 mm	100-007346	33,00 €
Fixing Rod	200 mm	100-004919	36,00 €
Fixing Rod	400 mm	100-004920	40,00 €
Fixing for Microscope Stack	for incident lamps, diameter 25 mm	100-004778	82,00 €
Fixing for Microscope Stack	for incident lamps, diameter 32 mm	100-005120	82,00 €
Wall bracket	for incident lamps	100-004980	40,00 €
IL Stand Adapter	for Nikon C-PSC	100-011656	37,00 €

Protective Glass Set



Mounting Bracket



Ball Joint



Magnet



X-Base



Stand Plate



Wall Bracket



U-Bracket



for Microscope Lighting

Adapter for MLH2 Series

Adapter	for Nikon Microscopes (bayonet)	100-011180	87,00 €
Adapter	for Nikon Microscopes	100-011485	55,00 €
Adapter	for Leica Microscopes	100-011030	55,00 €
Adapter	for Zeiss Microscopes	100-011008	55,00 €
Adapter	for Olympus Microscopes	100-011183	55,00 €
Adapter	for Motic Microscopes	100-011010	55,00 €



for Power Supply

Cables

Connection cable	3 m, M12, 5-pole, 3 free wires	100-006337	27,00 €
Connection cable	5 m, M12, 5-pole, 3 free wires	100-011340	33,00 €
Extension cable	3-pole, 3 m	100-010859	44,00 €
Extension cable	5-pole, 3m	100-010857	51,00 €

Power Supplies

Power supply	with coaxial connector (24 V, 1.000 mA)	100-007544	21,00 €
Power supply	with 3-pole industrial connector (24 V, 1.000 mA)	100-007545	41,00 €
Power supply	for LED3 (15 V, 2.400 mA)	100-010264	49,00 €

