

PE 5/L Positioning Unit for WT 5 Workpiece Pallets, 5 mm Lift, ± 0.3 mm Accuracy - Bosch Rexroth 3842998048

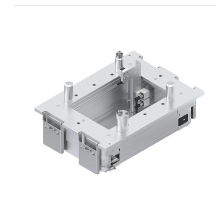
Item no. BRR-3842998048 **Manufacturer** Bosch Rexroth

Manufacturer no. 3842998048

The PE 5/L positioning unit lifts and positions WT 5 series workpiece pallets in ST 5/H and ST 5/XH conveyor sections with a repeatability of ± 0.3 mm in x and y directions. The pneumatic drive (5-6 bar) raises the pallet 5 mm above transport level, enabling precise manual or automated machining operations. The unit is installed from above and is delivered fully assembled including all fastening hardware.

TECHNICAL DATA

Article authenticity	Original product
Condition of article	New
Country of Manufacture	Germany
Execution	TEC
HS-Code	84313900
Weight	0.0099 kg



STANDARDS & COMPLIANCE

ESD safe

DESCRIPTION

The PE 5/L positioning unit positions and orients WT 5 workpiece pallets in longitudinal conveyor systems with high positioning accuracy requirements. It pneumatically lifts the pallet 5 mm above transport level and holds it to ± 0.3 mm in both x and y directions - suitable for manual and automated processing stations.

- Compatible with all WT 5 workpiece pallets (track widths 455, 650 and 845 mm)
- Positioning accuracy ± 0.3 mm in x and y for repeatable process results
- Permissible vertical process force up to 3,500 N (center load, incl. pallet weight); up to 15,000 N with direct support on request
- Compressed air connection 5-6 bar, push-in air connection 8 mm

- Top-mount installation only; compatible with ST 5/H and ST 5/XH (not FR variants)
- Delivered fully assembled, incl. fastening material for ST 5/XH conveyor sections

Technical data

Parameter	Value
Article number	3842998048
Lift above transport level	5 mm
Positioning accuracy	±0.3 mm (x and y)
Permissible vertical process force (center load)	up to 3,500 N (incl. pallet weight)
Max. process force with direct support	up to 15,000 N (on request)
Compressed air connection	5 ... 6 bar
Push-in air connection	8 mm
Track widths (b)	455 / 650 / 845 mm
Workpiece pallet length (IWT)	455 / 650 / 845 / 1,040 mm
Installation direction	from above only
Compatible conveyor sections	ST 5/H, ST 5/XH (not ST 5/H-FR, ST 5/XH-FR)
Delivery state	fully assembled, incl. fastening material (ST 5/XH)
Weight	0.0099 kg