

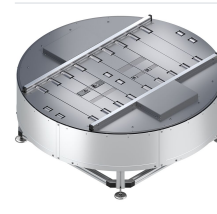
DE 5 Rotary Unit for Workpiece Carrier Transport up to 400 kg - Bosch Rexroth 3842998863

Item no. BRR-3842998863 **Manufacturer** Bosch Rexroth

Manufacturer no. 3842998863

The DE 5 rotary unit provides horizontal rotation and transfer of workpiece carriers within assembly line conveyor systems. It supports branch-offs and crossings for heavy workpiece pallets up to 400 kg. Supplied ready-to-install including supports; protective covers are available as optional extras.

TECHNICAL DATA



Article authenticity	Original product
Condition of article	New
Country of Manufacture	Germany
HS-Code	84313900
Weight	0.1 kg

DESCRIPTION

The DE 5 rotary unit is a module for the horizontal rotation and onward transport of workpiece carriers in the Bosch Rexroth transfer system. It enables branch-offs and crossings even for heavy workpiece pallets up to 400 kg.

- Ready-to-install with supports - integrates directly into the line
- Pneumatic straight connection 6 mm, operating pressure 5 to 6 bar
- Rotation times: 90° in 4 s, 180° in 7 s, 270° in 10 s
- Protective covers for traversing mechanism and section optionally retrofittable (cannot be ordered separately)

Technical data

Parameter	Value
Max. load capacity	400 kg
Transportation height [H]	585 ... 1400 mm
Track width in direction of transport [b]	455 / 650 / 845 mm
Preferred values [b]	455 / 650 / 845 mm

Parameter	Value
Length in direction of transport [IT]	455 / 650 / 845 / 1040 mm
Belt section length [L]	1000 / 1310 / 1180 mm
Dimension without protective cover [D1]	1140 / 1500 / 1500 mm
Dimension with protective cover [D2]	1156 / 1516 / 1516 mm
Rotation time 90°	4 s
Rotation time 180°	7 s
Rotation time 270°	10 s
Pneumatic straight connection	6 mm
Min. operating pressure [pmin]	5 bar
Max. operating pressure [pmax]	6 bar
Weight	approx. 0.1 kg (verify with manufacturer)